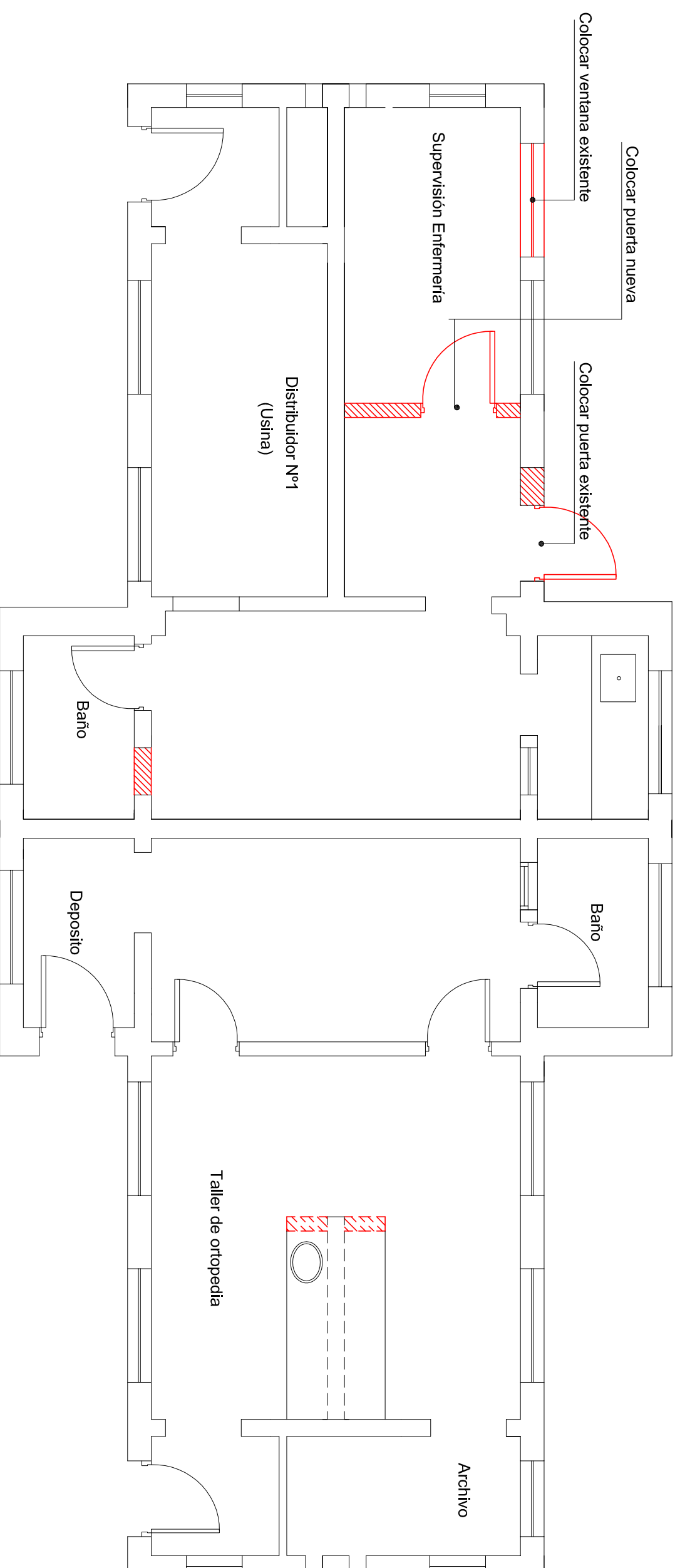



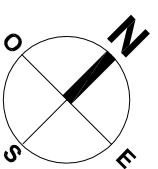


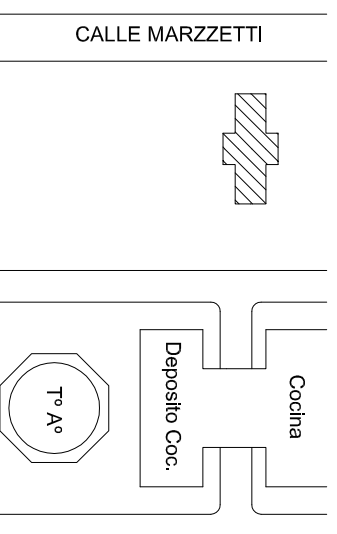
TALLER DE ORTOPEEDIA/ SUPERVISION DE ENFERMERIA



-  Mampostería a construir 1 m²
-  Mampostería bajo-mesada a construir 2 m²
-  Revoque a realizar 3 m²



IMPLANTACIÓN



COORDINACIÓN DE INFRAESTRUCTURA

MINISTERIO DE SALUD DE LA NACION
HOSPITAL NACIONAL DR. BALDOMERO SOMMER

OBRA: CONSULTORIOS TALLER DE ORTOPEEDIA/SUPERVISIÓN DE ENFERMERIA

PLANO: TALLER DE ORTOPEEDIA MAMPOSTERIA

ESCALA: 1 : 50

FECHA:

PLANO:

11