

PLIEGO DE BASES Y CONDICIONES PARTICULARES

ESPECIFICACIONES TÉCNICAS

Renglón N° 1:

Características Técnicas:

Nº de REFERENCIA	DESCRIPCION	NNE	MRC	REQUIREMENTS/STATEMENT	CLEAR_TEXT_REPLY USX Metric Fractions Decimal
AE701-4	HOSE, NONMETALLIC	4720-01- 136-7748	AAGR	CROSS-SECTIONAL SHAPE STYLE	ROUND
			AARX	INSIDE DIAMETER	0.52 CENTIMETERS NOMINAL
			ABJH	TEMP RATING	-65.0 DEG FAHRENHEIT SINGLE RESPONSE AND 300.0 DEG FAHRENHEIT SINGLE RESPONSE
			ABKV	OUTSIDE DIAMETER	1.17 CENTIMETERS NOMINAL
			ACKH	MINIMUM INSIDE BENDING RADIUS	5.08 CENTIMETERS
			CQBD	BURST TEST PRESSURE	2721600.00 GRAMS PER SQUARE INCH SINGLE RESPONSE
			CQCS	LAYER COMPOSITION AND LOCATION	1ST LAYER BRAIDED CORROSION RESISTANT STEEL WIRE, PARTIAL COVERAGE ERR-100
			CQCS	LAYER COMPOSITION AND LOCATION	OUTER LAYER BRAIDED CORROSION RESISTANT STEEL WIRE ERR-100
			CQGM	MAXIMUM OPERATING PRESSURE	453600.00 GRAMS PER SQUARE INCH SINGLE RESPONSE
			CRDW	HYDROSTATIC TEST PRESSURE	1360800.00 GRAMS PER SQUARE INCH SINGLE RESPONSE
			CRJM	OUTER COVERING ENVIRONMENTAL PROTECTION	ALCOHOL RESISTANT AND SOLVENT RESISTANT
			CRWL	INSIDE SURFACE CONDITION	SMOOTH
			MAT	MATERIAL	PLASTIC POLYETHYLENE TUBE

PLIEGO DE BASES Y CONDICIONES PARTICULARES

ESPECIFICACIONES TÉCNICAS

Renglón N° 2:

Características Técnicas:

N° de REFERENCIA	DESCRIPCIÓN	NNE	MRC	REQUIREMENTS/STATEMENT	CLEAR_TEXT_REPLY USX Metric Fractions Decimal
AE701-8	HOSE, NONMETALLIC	4720-01-136-7749	AAGR	CROSS-SECTIONAL SHAPE STYLE	ROUND
			AARX	INSIDE DIAMETER	1.05 CENTIMETERS NOMINAL
			ABJH	TEMP RATING	-65.0 DEG FAHRENHEIT SINGLE RESPONSE AND 300.0 DEG FAHRENHEIT SINGLE RESPONSE
			ABKV	OUTSIDE DIAMETER	1.71 CENTIMETERS NOMINAL
			ACKH	MINIMUM INSIDE BENDING RADIUS	8.89 CENTIMETERS
			CQBD	BURST TEST PRESSURE	2268000.00 GRAMS PER SQUARE INCH SINGLE RESPONSE
			CQCS	LAYER COMPOSITION AND LOCATION	1ST LAYER BRAIDED CORROSION RESISTANT STEEL WIRE, PARTIAL COVERAGE ERR-100
			CQCS	LAYER COMPOSITION AND LOCATION	OUTER LAYER BRAIDED CORROSION RESISTANT STEEL WIRE ERR-100
			CQGM	MAXIMUM OPERATING PRESSURE	453600.00 GRAMS PER SQUARE INCH SINGLE RESPONSE
			CRDW	HYDROSTATIC TEST PRESSURE	1134000.00 GRAMS PER SQUARE INCH SINGLE RESPONSE
			CRJM	OUTER COVERING ENVIRONMENTAL PROTECTION	ALCOHOL RESISTANT AND SOLVENT RESISTANT
			CRWL	INSIDE SURFACE CONDITION	SMOOTH
			MAT	MATERIAL	PLASTIC POLYETHYLENE TUBE

PLIEGO DE BASES Y CONDICIONES PARTICULARES

ESPECIFICACIONES TÉCNICAS

Renglón N° 3:

Características Técnicas:

Nº de REFERENCIA	DESCRIPCION	NNE	MRC	REQUIREMENTS/STATEMENT	CLEAR_TEXT_REPLY USX Metric Fractions Decimal
AE701-12	HOSE, NONMETALLIC	4720-00-555-3499	AAGR	CROSS-SECTIONAL SHAPE STYLE	ROUND
			AARX	INSIDE DIAMETER	1.75 CENTIMETERS NOMINAL
			ABJH	TEMP RATING	-40.0 DEG FAHRENHEIT SINGLE RESPONSE AND 300.0 DEG FAHRENHEIT SINGLE RESPONSE
			ABKV	OUTSIDE DIAMETER	2.38 CENTIMETERS NOMINAL
			ACKH	MINIMUM INSIDE BENDING RADIUS	11.43 CENTIMETERS
			AGAV	END ITEM IDENTIFICATION	GRUMMAN A10 AIRCRAFT
			CQBD	BURST TEST PRESSURE	1701000.00 GRAMS PER SQUARE INCH SINGLE RESPONSE
			CQCS	LAYER COMPOSITION AND LOCATION	1ST LAYER BRAIDED CORROSION RESISTANT STEEL WIRE, PARTIAL COVERAGE ERR-100
			CQCS	LAYER COMPOSITION AND LOCATION	OUTER LAYER BRAIDED CORROSION RESISTANT STEEL WIRE ERR-100
			CQGM	MAXIMUM OPERATING PRESSURE	453600.00 GRAMS PER SQUARE INCH SINGLE RESPONSE
			CRDW	HYDROSTATIC TEST PRESSURE	907200.00 GRAMS PER SQUARE INCH SINGLE RESPONSE
			CRJM	OUTER COVERING ENVIRONMENTAL PROTECTION	CORROSION RESISTANT
			CRWL	INSIDE SURFACE CONDITION	SMOOTH
			MAT T	MATERIAL	RUBBER SYNTHETIC TUBE

PLIEGO DE BASES Y CONDICIONES PARTICULARES

ESPECIFICACIONES TÉCNICAS

			MEDIA FOR WHICH DESIGNED	FUEL/OIL, HYDROCARBON SINGLE RESPONSE
			SPECIFICATION/STANDARD DATA	81349-MIL-H-83797 GOVERNMENT SPECIFICATION
			NONDEFINITIVE SPEC/STD DATA	12 SIZE

Renglón N° 4:

Características Técnicas:

Nº de REFERENCIA	DESCRIPCION	NNE	MRC	REQUIREMENTS/STATEMENT	CLEAR_TEXT_REPLY USX Metric Fractions Decimal
8846-4	ELBOW, TUBE TO HOSE	4730-00-709- 3887	AAJ D	THREAD CLASS	3B 1ST END
			AHN C	CONNECTION STYLE	GRIPPING NIPPLE (NOSE) 2ND END
			AHN C	CONNECTION STYLE	SWIVEL NUT, FLARE (TUBE) STYLE 3 OPTIONAL END 1ST END
			AHS J	LEG LENGTH	0.95 CENTIMETERS NOMINAL 1ST END
			AHS J	LEG LENGTH	4.13 CENTIMETERS NOMINAL 2ND END
			AWL S	CONNECTION TYPE	THREADED EXTERNAL HOSE GRIPPING 2ND END
			AWL S	CONNECTION TYPE	THREADED INTERNAL TUBE 1ST END
			CQJ X	NOMINAL THREAD SIZE	1.11 CENTIMETERS 1ST END
			CQR B	SEAT ANGLE	37.0 DEGREES 1ST END
			CRF Y	FLOW ANGLE	45.0 DEGREES
			CWD W	NOMINAL INSIDE DIAMETER HOSE ACCOMMODATED	0.56 CENTIMETERS 2ND END
			CWD Z	NOMINAL OUTSIDE DIAMETER HOSE ACCOMMODATED	1.11 CENTIMETERS 2ND END

PLIEGO DE BASES Y CONDICIONES PARTICULARES

ESPECIFICACIONES TÉCNICAS

			CWF D	NOMINAL OUTSIDE DIAMETER TUBE ACCOMMODATED	0.64 CENTIMETERS 1ST END
			MAT T	MATERIAL	STEEL OVERALL
			SFT T	SURFACE TREATMENT	CADMIUM OVERALL
			THS D	THREAD SERIES DESIGNATOR	UNF 1ST END
			TMQ Y	FURNISHED ITEMS AND QUANTITY	1 HOSE COUPLING NUT

Renglón N° 5:

Características Técnicas:

Nº de REFERENCIA	DESCRIPCION	NNE	MRC	REQUIREMENTS/STAT EMENT	CLEAR_TEXT_REPLY USX Metric Fractions Decimal
8891-4	ELBOW, TUBE TO HOSE	4730-00-618- 8862	AAJ D	THREAD CLASS	3B 1ST END
			AHN C	CONNECTION STYLE	GRIPPING NIPPLE (NOSE) 2ND END
			AHN C	CONNECTION STYLE	SWIVEL NUT, FLARE (TUBE) STYLE 3 OPTIONAL END 1ST END
			AHS J	LEG LENGTH	2.58 CENTIMETERS NOMINAL 1ST END
			AHS J	LEG LENGTH	3.73 CENTIMETERS NOMINAL 2ND END
			AWL S	CONNECTION TYPE	THREADED EXTERNAL HOSE GRIPPING 2ND END
			AWL S	CONNECTION TYPE	THREADED INTERNAL TUBE 1ST END
			CQJ X	NOMINAL THREAD SIZE	1.11 CENTIMETERS 1ST END
			CQR B	SEAT ANGLE	37.0 DEGREES 1ST END
			CRF Y	FLOW ANGLE	90.0 DEGREES
			CWD W	NOMINAL INSIDE DIAMETER HOSE ACCOMMODATED	0.55 CENTIMETERS 2ND END

PLIEGO DE BASES Y CONDICIONES PARTICULARES

ESPECIFICACIONES TÉCNICAS

			CWD Z	NOMINAL OUTSIDE DIAMETER HOSE ACCOMMODATED	1.11 CENTIMETERS 2ND END
			CWF D	NOMINAL OUTSIDE DIAMETER TUBE ACCOMMODATED	0.64 CENTIMETERS 1ST END
			MAT T	MATERIAL	STEEL OVERALL
			SFT T	SURFACE TREATMENT	CADMIUM OVERALL
			THS D	THREAD SERIES DESIGNATOR	UNJF 1ST END
			TMQ Y	FURNISHED ITEMS AND QUANTITY	1 LONG COUPLING NUT AND 1 COUPLING SLEEVE

Renglón N° 6:

Características Técnicas:

Nº de REFERENCIA	DESCRIPCION	NNE	MRC	REQUIREMENTS/STAT EMENT	CLEAR_TEXT_REPLY USX Metric Fractions Decimal
8846-8D	ELBOW, TUBE TO HOSE	4730-00- 684-6394	AAJ D	THREAD CLASS	3B 1ST END
			AHN C	CONNECTION STYLE	GRIPPING NIPPLE (NOSE) 2ND END
			AHN C	CONNECTION STYLE	SWIVEL NUT, FLARE (TUBE) STYLE 3 OPTIONAL END 1ST END
			AHS J	LEG LENGTH	2.38 CENTIMETERS NOMINAL 1ST END
			AHS J	LEG LENGTH	2.77 CENTIMETERS NOMINAL 2ND END
			AWL S	CONNECTION TYPE	THREADED EXTERNAL HOSE GRIPPING 2ND END
			AWL S	CONNECTION TYPE	THREADED INTERNAL TUBE 1ST END
			CQJ X	NOMINAL THREAD SIZE	1.91 CENTIMETERS 1ST END
			CQR B	SEAT ANGLE	37.0 DEGREES 1ST END
			CRF Y	FLOW ANGLE	45.0 DEGREES

PLIEGO DE BASES Y CONDICIONES PARTICULARES

ESPECIFICACIONES TÉCNICAS

			CWD W	NOMINAL INSIDE DIAMETER HOSE ACCOMMODATED	1.11 CENTIMETERS 2ND END
			CWD Z	NOMINAL OUTSIDE DIAMETER HOSE ACCOMMODATED	1.63 CENTIMETERS 2ND END
			CWF D	NOMINAL OUTSIDE DIAMETER TUBE ACCOMMODATED	1.27 CENTIMETERS 1ST END
			FEA T	SPECIAL FEATURES	INSIDE SURFACE TREATED
			MAT T	MATERIAL	ALUMINUM ALLOY OVERALL
			MED A	MEDIA FOR WHICH DESIGNED	FLUID SINGLE RESPONSE
			SFT T	SURFACE TREATMENT	ANODIZE ELBOW
			THS D	THREAD SERIES DESIGNATOR	UNF 1ST END
			TMQ Y	FURNISHED ITEMS AND QUANTITY	1 LONG COUPLING NUT

Renglón N° 7:

Características Técnicas:

Nº de REFERENCIA	DESCRIPCION	NNE	MRC	REQUIREMENTS/STAT EMENT	CLEAR_TEXT_REPLY USX Metric Fractions Decimal
8891-8D	ELBOW, TUBE TO HOSE	4730-00-795- 0945	AAJD	THREAD CLASS	3B 1ST END
			AEHZ	MAXIMUM OPERATING TEMP	250.0 DEG FAHRENHEIT SINGLE RESPONSE
			AHN C	CONNECTION STYLE	GRIPPING NIPPLE (NOSE) 2ND END
			AHN C	CONNECTION STYLE	SWIVEL NUT, FLARE (TUBE) STYLE 3 OPTIONAL END 1ST END
			AHSJ	LEG LENGTH	5.11 CENTIMETERS NOMINAL 2ND END
			AHSJ	LEG LENGTH	2.38 CENTIMETERS NOMINAL 1ST END
			AWL S	CONNECTION TYPE	THREADED EXTERNAL HOSE GRIPPING 2ND END
			AWL S	CONNECTION TYPE	THREADED INTERNAL TUBE 1ST END

PLIEGO DE BASES Y CONDICIONES PARTICULARES

ESPECIFICACIONES TÉCNICAS

			CQG M	MAXIMUM OPERATING PRESSURE	453600.00 GRAMS PER SQUARE INCH SINGLE RESPONSE
			CQJX	NOMINAL THREAD SIZE	1.91 CENTIMETERS 1ST END
			CQR B	SEAT ANGLE	37.0 DEGREES 1ST END
			CRFY	FLOW ANGLE	90.0 DEGREES
			CWD W	NOMINAL INSIDE DIAMETER HOSE ACCOMMODATED	1.11 CENTIMETERS 2ND END
			CWD Z	NOMINAL OUTSIDE DIAMETER HOSE ACCOMMODATED	1.66 CENTIMETERS 2ND END
			CWF D	NOMINAL OUTSIDE DIAMETER TUBE ACCOMMODATED	1.27 CENTIMETERS 1ST END
			FEAT	SPECIAL FEATURES	SUPPORTS GRUMMAN A10A AIRCRAFT
			MATT	MATERIAL	ALUMINUM ALLOY 5052 OVERALL
			MDC L	MATERIAL DOCUMENT AND CLASSIFICATION	WW-T-700/4 FED SPEC SINGLE MATERIAL RESPONSE OVERALL
			SFTT	SURFACE TREATMENT	ANODIZE OVERALL
			STDC	SURFACE TREATMENT DOCUMENT AND CLASSIFICATION	MIL-A-8625 MIL SPEC SINGLE TREATMENT RESPONSE OVERALL
			THSD	THREAD SERIES DESIGNATOR	UNJF 1ST END
			TMQ Y	FURNISHED ITEMS AND QUANTITY	1 HOSE SOCKET

Renglón N° 8:

Características Técnicas:

Nº de REFERENCIA	DESCRIPCION	NNE	MRC	REQUIREMENTS/STAT EMENT	CLEAR_TEXT_REPLY USX Metric Fractions Decimal
8891-12D	ELBOW, TUBE TO HOSE	4730-00-795- 0945	AAJD	THREAD CLASS	3B 1ST END
			AEHZ	MAXIMUM OPERATING TEMP	250.0 DEG FAHRENHEIT SINGLE RESPONSE
			AHN C	CONNECTION STYLE	GRIPPING NIPPLE (NOSE) 2ND END

PLIEGO DE BASES Y CONDICIONES PARTICULARES

ESPECIFICACIONES TÉCNICAS

			AHNC	CONNECTION STYLE	SWIVEL NUT, FLARE (TUBE) STYLE 3 OPTIONAL END 1ST END
			AHSJ	LEG LENGTH	5.11 CENTIMETERS NOMINAL 2ND END
			AHSJ	LEG LENGTH	2.38 CENTIMETERS NOMINAL 1ST END
			AWLS	CONNECTION TYPE	THREADED EXTERNAL HOSE GRIPPING 2ND END
			AWLS	CONNECTION TYPE	THREADED INTERNAL TUBE 1ST END
			CQGM	MAXIMUM OPERATING PRESSURE	453600.00 GRAMS PER SQUARE INCH SINGLE RESPONSE
			CQJX	NOMINAL THREAD SIZE	1.91 CENTIMETERS 1ST END
			CQRB	SEAT ANGLE	37.0 DEGREES 1ST END
			CRFY	FLOW ANGLE	90.0 DEGREES
			CWDW	NOMINAL INSIDE DIAMETER HOSE ACCOMMODATED	1.11 CENTIMETERS 2ND END
			CWDZ	NOMINAL OUTSIDE DIAMETER HOSE ACCOMMODATED	1.66 CENTIMETERS 2ND END
			CWFD	NOMINAL OUTSIDE DIAMETER TUBE ACCOMMODATED	1.27 CENTIMETERS 1ST END
			FEAT	SPECIAL FEATURES	SUPPORTS GRUMMAN A10A AIRCRAFT
			MATT	MATERIAL	ALUMINUM ALLOY 5052 OVERALL
			MDC L	MATERIAL DOCUMENT AND CLASSIFICATION	WW-T-700/4 FED SPEC SINGLE MATERIAL RESPONSE OVERALL
			SFTT	SURFACE TREATMENT	ANODIZE OVERALL
			STDC	SURFACE TREATMENT DOCUMENT AND CLASSIFICATION	MIL-A-8625 MIL SPEC SINGLE TREATMENT RESPONSE OVERALL
			THSD	THREAD SERIES DESIGNATOR	UNJF 1ST END
			TMQ Y	FURNISHED ITEMS AND QUANTITY	1 HOSE SOCKET

PLIEGO DE BASES Y CONDICIONES PARTICULARES

ESPECIFICACIONES TÉCNICAS

Renglón N° 9:

Características Técnicas:

N° de REFERENCIA	DESCRIPCION	NNE	MRC	REQUIREMENTS/STATEMENT	CLEAR_TEXT_REPLY U SX Metric Fractions Decimal
8846-12D	ELBOW, TUBE TO HOSE	4730-00-618- 7382	AAJD	THREAD CLASS	3B 1ST END
			AEHZ	MAXIMUM OPERATING TEMP	25.0 DEG FAHRENHEIT SINGLE RESPONSE
			AHNC	CONNECTION STYLE	GRIPPING NIPPLE (NOSE) 2ND END
			AHNC	CONNECTION STYLE	SWIVEL NUT, FLARE (TUBE) STYLE 3 OPTIONAL END 1ST END
			AHSJ	LEG LENGTH	3.29 CENTIMETERS NOMINAL 1ST END
			AHSJ	LEG LENGTH	8.65 CENTIMETERS NOMINAL 2ND END
			AWLS	CONNECTION TYPE	THREADED EXTERNAL HOSE GRIPPING 2ND END
			AWLS	CONNECTION TYPE	THREADED INTERNAL TUBE 1ST END
			CMLP	THREAD QUANTITY PER INCH	12 1ST END
			CQG M	MAXIMUM OPERATING PRESSURE	453600.00 GRAMS PER SQUARE INCH SINGLE RESPONSE
			CQJX	NOMINAL THREAD SIZE	2.70 CENTIMETERS 1ST END
			CQRB	SEAT ANGLE	37.0 DEGREES 1ST END
			CRFY	FLOW ANGLE	45.0 DEGREES
			CWD W	NOMINAL INSIDE DIAMETER HOSE ACCOMMODATED	1.59 CENTIMETERS 2ND END
			CWD W	NOMINAL INSIDE DIAMETER HOSE ACCOMMODATED	2.74 CENTIMETERS 1ST END
			CWDZ	NOMINAL OUTSIDE DIAMETER HOSE ACCOMMODATED	3.02 CENTIMETERS 2ND END
			CWFD	NOMINAL OUTSIDE DIAMETER TUBE ACCOMMODATED	1.91 CENTIMETERS 1ST END
MATT	MATERIAL	ALUMINUM OVERALL			

PLIEGO DE BASES Y CONDICIONES PARTICULARES

ESPECIFICACIONES TÉCNICAS

			MDCL	MATERIAL DOCUMENT AND CLASSIFICATION	QQ-A-225/6 SAE 2024 T6 FED SPEC SINGLE MATERIAL RESPONSE OVERALL OR QQ-A-225/6 SAE 2024 T851 FED SPEC SINGLE MATERIAL RESPONSE OVERALL
			MEDA	MEDIA FOR WHICH DESIGNED	FUEL SINGLE RESPONSE
			SFTT	SURFACE TREATMENT	ANODIZE OVERALL
			STDC	SURFACE TREATMENT DOCUMENT AND CLASSIFICATION	MIL-A-8625 MIL SPEC SINGLE TREATMENT RESPONSE OVERALL
			THSD	THREAD SERIES DESIGNATOR	UNJ 1ST END
			TMQY	FURNISHED ITEMS AND QUANTITY	1 HOSE COUPLING NUT

Renglón N° 10:

Características Técnicas:

Nº de REFERENCIA	DESCRIPCION	NNE	MRC	REQUIREMENTS/STATEMENT	CLEAR_TEXT_REPLY USX Metric Fractions Decimal
AN816-8D	ADAPTER,ST RAIGHT,PIPE TO BOSS	4730-00- 196-9581	AAA R	NOMINAL PIPE SIZE ACCOMMODATED	0.95 CENTIMETERS 2ND END
			AAJ D	THREAD CLASS	3A 2ND END
			AGA V	END ITEM IDENTIFICATION	GRUMMAN A-10 ACFT
			AHN C	CONNECTION STYLE	FLARED W/ GASKET SEAL (BOSS) 2ND END
			AHN C	CONNECTION STYLE	PLAIN (PIPE) 1ST END
			AWL S	CONNECTION TYPE	THREADED EXTERNAL BOSS 2ND END
			AWL S	CONNECTION TYPE	THREADED EXTERNAL PIPE 1ST END
			CQJ X	NOMINAL THREAD SIZE	0.95 CENTIMETERS 1ST END
			CQJ X	NOMINAL THREAD SIZE	1.91 CENTIMETERS 2ND END
			CWF R	NOMINAL OVERALL LENGTH	3.81 CENTIMETERS

PLIEGO DE BASES Y CONDICIONES PARTICULARES

ESPECIFICACIONES TÉCNICAS

			FEA T	SPECIAL FEATURES	CENTER WRENCHING FACILITY
			MAT T	MATERIAL	ALUMINUM ALLOY OVERALL
			SFT T	SURFACE TREATMENT	ANODIZE OVERALL
			THS D	THREAD SERIES DESIGNATOR	ANPT 1ST END
			THS D	THREAD SERIES DESIGNATOR	UNJF 2ND END
			ZZZ K	SPECIFICATION/STAND ARD DATA	88044AN816 GOVERNMENT STANDARD AND 81343-AS4842/1 PROFESSIONAL/INDU STRIAL ASSOCIATION STANDARD

Renglón N° 11:

Características Técnicas:

Nº de REFERENCIA	DESCRIPCIO N	NNE	MRC	REQUIREMENTS/STAT EMENT	CLEAR_TEXT_REPLY USX Metric Fractions Decimal
AE102-8	INSULATIO N SLEEVING,T HERMAL	5640-00- 568-4687	AAR M	LAYER QUANTITY	1
			AAR N	FABRICATION METHOD	BRAIDED
			AAR Q	FLAMMABILITY RATING	INCOMBUSTIBLE
			AAR S	OUTER COVERING ENVIRONMENTAL PROTECTION	FIRE RETARDANT
			AAR U	INSULATION THICKNESS	0.32 CENTIMETERS NOMINAL
			AAR X	INSIDE DIAMETER	1.27 CENTIMETERS NOMINAL
			ABR Y	LENGTH	30.48 CENTIMETERS NOMINAL
			ARJ D	DESIGN FORM	FULL ROUND
			AZK Q	TEMP RATING	-65.0 DEG FAHRENHEIT MINIMUM AND 500.0 DEG FAHRENHEIT MAXIMUM
			FLE	FLEXIBILITY	FLEXIBLE

PLIEGO DE BASES Y CONDICIONES PARTICULARES

ESPECIFICACIONES TÉCNICAS

			X		
			MAT T	MATERIAL	GLASS FIBER

Renglón N° 12:

Características Técnicas:

Nº de REFERENCIA	DESCRIPCION	NNE	MRC	REQUIREMENTS/STATEMENT	CLEAR_TEXT_REPLY USX Metric Fractions Decimal
AE102-12	INSULATION SLEEVING, THERMAL	5640-00-469-7723	AARM	LAYER QUANTITY	1
			AARN	FABRICATION METHOD	BRAIDED
			AARQ	FLAMMABILITY RATING	INCOMBUSTIBLE
			AARU	INSULATION THICKNESS	0.28 CENTIMETERS MINIMUM AND 0.36 CENTIMETERS MAXIMUM
			AARX	INSIDE DIAMETER	1.83 CENTIMETERS MINIMUM AND 1.98 CENTIMETERS MAXIMUM
			ARJD	DESIGN FORM	FULL ROUND
			AZKQ	TEMP RATING	-100.0 DEG FAHRENHEIT MINIMUM AND 450.0 DEG FAHRENHEIT MAXIMUM
			FLEX	FLEXIBILITY	FLEXIBLE
			MATT	MATERIAL	GLASS FIBER
			PRPY	PROPRIETARY CHARACTERISTICS	PACS
			SFTT	SURFACE TREATMENT	RESIN SYNTHETIC

Renglón N° 13:

Características Técnicas:

Nº de REFERENCIA	DESCRIPCION	NNE	MRC	REQUIREMENTS/STATEMENT	CLEAR_TEXT_REPLY USX Metric Fractions Decimal
AE102-18	INSULATION SLEEVING, THERMAL	5640-00-507-4104	AARM	LAYER QUANTITY	1
			AARN	FABRICATION METHOD	BRAIDED
			AARQ	FLAMMABILITY RATING	INCOMBUSTIBLE
			AARS	OUTER COVERING ENVIRONMENTAL PROTECTION	FIRE RETARDANT
			AAR	INSULATION	0.32 CENTIMETERS

PLIEGO DE BASES Y CONDICIONES PARTICULARES

ESPECIFICACIONES TÉCNICAS

			U	THICKNESS	NOMINAL
			AAR X	INSIDE DIAMETER	2.87 CENTIMETERS NOMINAL
			ARJ D	DESIGN FORM	FULL ROUND
			AZK Q	TEMP RATING	-65.0 DEG FAHRENHEIT MINIMUM AND 500.0 DEG FAHRENHEIT MAXIMUM
			FEA T	SPECIAL FEATURES	LENGTH SHALL BE AS SPECIFIED; NORMAL COMMERCIAL MAXIMUM LENGTH PER PIECE 20 FT
			FLE X	FLEXIBILITY	FLEXIBLE
			MAT T	MATERIAL	GLASS FIBER

Renglón N° 14:

Características Técnicas:

Nº de REFERENCIA	DESCRIPCION	NNE	MRC	REQUIREMENTS/STATEMENT	CLEAR_TEXT_REPLY USX Metric Fractions Decimal
900591B1C	CLAMP, HOSE	4730-00- 015-1418	AAR X	INSIDE DIAMETER	2.54 CENTIMETERS NOMINAL
			ABM K	OVERALL WIDTH	0.64 CENTIMETERS NOMINAL
			AXW J	FASTENING DEVICE TYPE	SPRING TENSION
			MAT T	MATERIAL	STEEL COMP 201 OVERALL
			SFT T	SURFACE TREATMENT	PASSIVATE OVERALL
			STY L	STYLE DESIGNATOR	ADJUSTABLE BAND

Renglón N° 15:

Características Técnicas:

Nº de REFERENCIA	DESCRIPCION	NNE	MRC	REQUIREMENTS/STATEMENT	CLEAR_TEXT_REPLY USX Metric Fractions Decimal
900591B2C	CLAMP, HOSE	4730-00- 996-8258	AAR X	INSIDE DIAMETER	3.81 CENTIMETERS MINIMUM AND 4.09 CENTIMETERS

PLIEGO DE BASES Y CONDICIONES PARTICULARES

ESPECIFICACIONES TÉCNICAS

					MAXIMUM
			ABM K	OVERALL WIDTH	0.64 CENTIMETERS NOMINAL
			AXW J	FASTENING DEVICE TYPE	BUCKLE
			MAT T	MATERIAL	STEEL CORROSION RESISTING OVERALL
			PRP Y	PROPRIETARY CHARACTERISTICS	PACS
			SFT T	SURFACE TREATMENT	PASSIVATE OVERALL
			STY L	STYLE DESIGNATOR	ADJUSTABLE BAND

Renglón N° 16:

Características Técnicas:

Nº de REFERENCIA	DESCRIPCION	NNE	MRC	REQUIREMENTS/STAT EMENT	CLEAR_TEXT_REPLY USX Metric Fractions Decimal
900591B3C	CLAMP,HOSE	4730-00- 450-5498	AAR X	INSIDE DIAMETER	5.08 CENTIMETERS NOMINAL
			ABM K	OVERALL WIDTH	0.64 CENTIMETERS NOMINAL
			AXW J	FASTENING DEVICE TYPE	BUCKLE
			MAT T	MATERIAL	STEEL CORROSION RESISTING OVERALL
			PRP Y	PROPRIETARY CHARACTERISTICS	PACS
			STY L	STYLE DESIGNATOR	ADJUSTABLE BAND

PLIEGO DE BASES Y CONDICIONES PARTICULARES

ESPECIFICACIONES TÉCNICAS

Renglón N°17. KIT DE JUNTAS N/P: EQ7018
INTRODUCING GENUINE CONTINENTAL PARTS KITS



CONTINENTAL MOTORS

MAJOR OVERHAUL GASKET KIT

The perfect companion to the hardware kit. One stop convenience provides every gasket needed to complete your major overhaul. All factory fresh and serialized for your engine model. Kit includes the following:

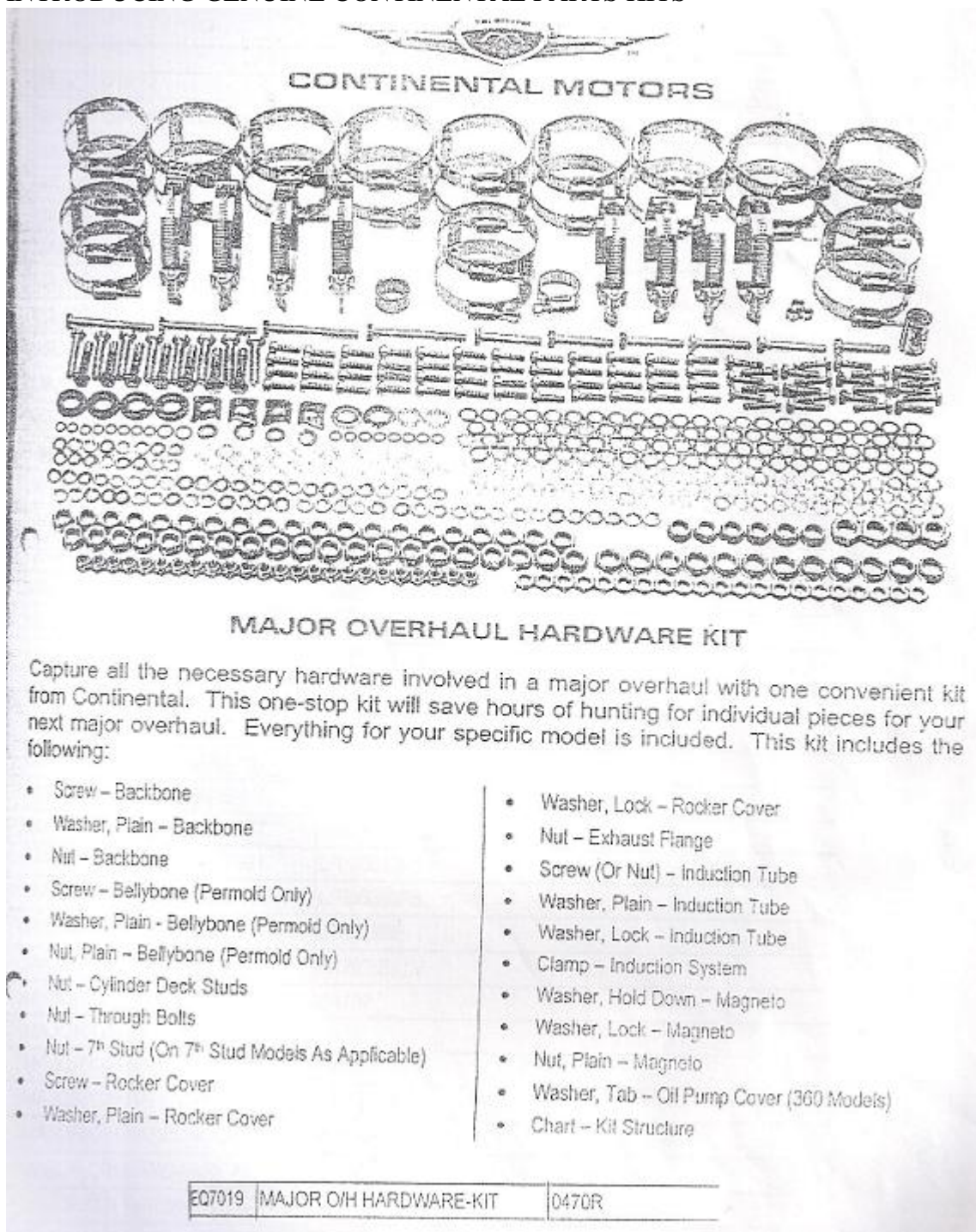
- Gasket - Alternator (Gear Driven)
- Gasket - Camshaft Hole Cover *
- Gasket - Copper, Timing Plug *
- Seal, O-Ring - Through Bolts
- Gasket (Or O-Ring) - Oil Gauge Rod
- Gasket - Breather/Oil Filler *
- Hose - Oil Filler *
- Seal, O-Rings - Breather/Oil Filler *
- Seal Assembly - Crankshaft, Nose
- Gasket - Idler Bushing
- Set - Cylinder
- Gasket - Accessory Case *
- Hose - Induction Tubes
- Gasket - Fuel Pump
- Gasket - Magneto To Crankcase
- Gasket - Accessory To Drive Adapter
- Gasket - Drive Adapter To Crankcase *
- Seal, Lip - Accessory Drive Adapter *
- Bushing, Rubber - Magneto Drive
- Bushing, Rubber - Alternator Drive *
- Retainer - Alternator Drive Bushing (300 & 360 Models)
- Gasket - Oil Cooler To Crankcase
- Gasket - Oil Cooler To Adapter *
- Seal, O-Ring - Oil Cooler Adapter To Crankcase (360 Models)
- Gasket - Special Plug Or Vernatherm
- Seal, O-Ring - Special Plug, Vernatherm Plug *
- Gasket - Copper Or Fiber, Oil Pick-Up Tube
- Gasket - Copper, Oil Drain Plug
- Seal, Lip - Tach Drive
- Gasket - Tach Drive Housing
- Gasket - Oil Pump *
- Gasket - Oil Filler Adapter *
- Seal, O-Ring - Oil Filler Adapter
- Gasket - Copper, Oil Pressure Relief Valve
- Gasket - Copper, Oil Pressure Screen *
- Gasket - Copper, Oil Suction Screen & Accessory Case Plugs (360 Models)
- Gasket - Oil Sump
- Felt - Oil Sump *
- Gasket - Starter Adapter To Crankcase
- Seal, O-Ring - Starter To Adapter
- Gasket - Carb. To Manifold *
- Gasket - Carb. To Airbox *
- Hose, Extension - Dipstick Housing *
- Clamp - Dipstick Housing Hose *
- Gasket - Turbo To Exhaust (Turbo Models)
- Gasket - Wastegate To Exhaust (Turbo Models)
- Gasket - Reservoir To Turbo (Turbo Models *)
- Seal, O-Ring - Coolant Manifold (Liquid Models)
- Chart - Kit Structure

* As Applicable

PLIEGO DE BASES Y CONDICIONES PARTICULARES

ESPECIFICACIONES TÉCNICAS

**Renglón N°18. KIT DE TUERCAS Y BULONES Y BRIDAS N/P: EQ7019
INTRODUCING GENUINE CONTINENTAL PARTS KITS**



CONTINENTAL MOTORS

MAJOR OVERHAUL HARDWARE KIT

Capture all the necessary hardware involved in a major overhaul with one convenient kit from Continental. This one-stop kit will save hours of hunting for individual pieces for your next major overhaul. Everything for your specific model is included. This kit includes the following:

- Screw - Backbone
- Washer, Plain - Backbone
- Nut - Backbone
- Screw - Bellybone (Permold Only)
- Washer, Plain - Bellybone (Permold Only)
- Nut, Plain - Bellybone (Permold Only)
- Nut - Cylinder Deck Studs
- Nut - Through Bolts
- Nut - 7th Stud (On 7th Stud Models As Applicable)
- Screw - Rocker Cover
- Washer, Plain - Rocker Cover
- Washer, Lock - Rocker Cover
- Nut - Exhaust Flange
- Screw (Or Nut) - Induction Tube
- Washer, Plain - Induction Tube
- Washer, Lock - Induction Tube
- Clamp - Induction System
- Washer, Hold Down - Magneto
- Washer, Lock - Magneto
- Nut, Plain - Magneto
- Washer, Tab - Oil Pump Cover (360 Models)
- Chart - Kit Structure

EQ7019	MAJOR O/H HARDWARE-KIT	0470R
--------	------------------------	-------

PLIEGO DE BASES Y CONDICIONES PARTICULARES

ESPECIFICACIONES TÉCNICAS

Renglón N°19. ENGRANAJE CIGÜEÑAL N/P: 657175 REEMP DE 536421
 X30587A OCTUBRE 1989 FIG 72-20-01-16

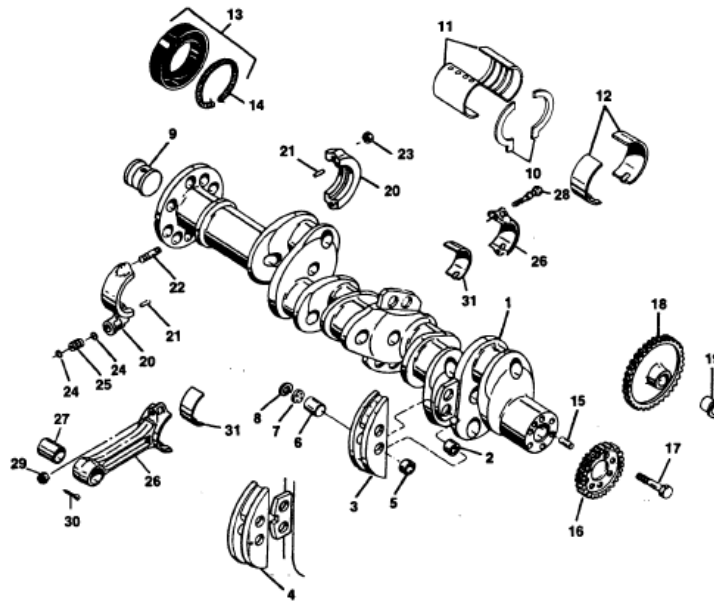


FIGURE 72-20-01 CRANKSHAFT GROUP

Renglón N°20. PISTON N/P: 646263
 X30587A OCTUBRE 1989 FIG 72-20-03-1

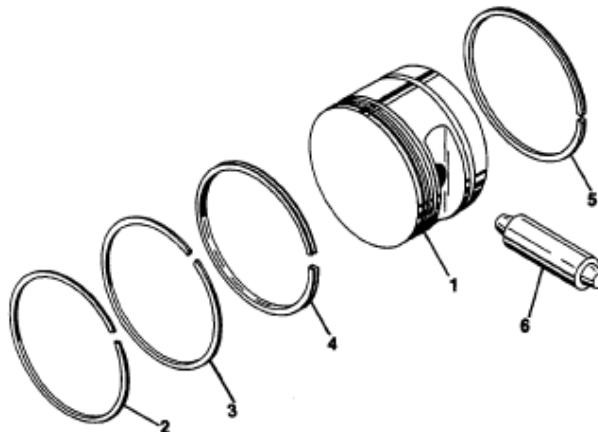


FIGURE 72-20-03. PISTON AND RING ASSEMBLY

PLIEGO DE BASES Y CONDICIONES PARTICULARES

ESPECIFICACIONES TÉCNICAS

Renglón N°21. ROTOCOIL N/P: 652112
X30587A OCTUBRE 1989 FIG 72-30-02-14

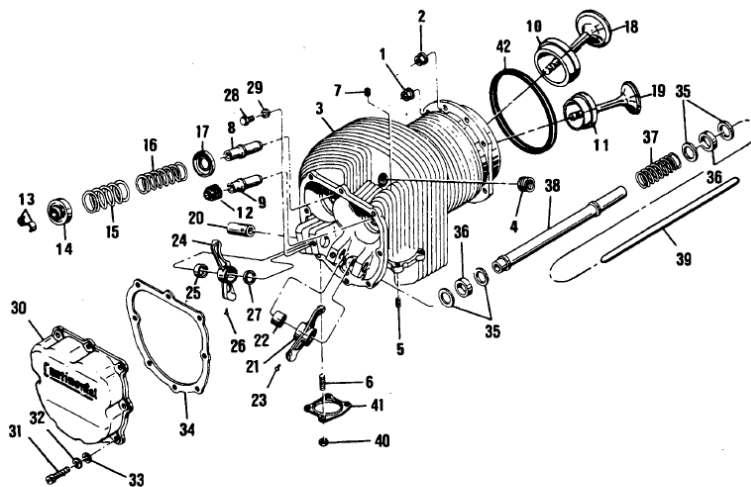


FIGURE 72-30-02. CYLINDER ASSEMBLY
MODELS O-470-B,G,K,L,M,P,R,S,U

Renglón N°22. TUERCA PLANA ¼ N/P: 646605
X30587A OCTUBRE 1989 FIG 72-50-07- 8

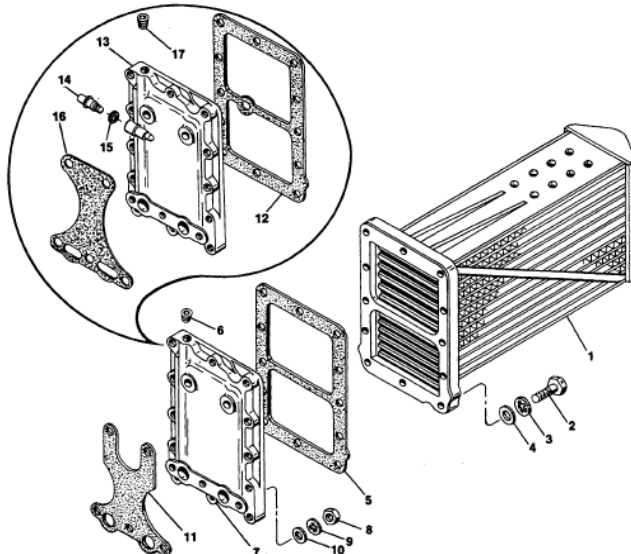


FIGURE 72-50-07. OIL COOLER
MODELS O-470-B,M

PLIEGO DE BASES Y CONDICIONES PARTICULARES

ESPECIFICACIONES TÉCNICAS

Renglón N°23. TUERCA PLANA 5/16 N/P: 634511
X30587A OCTUBRE 1989 FIG 72-10-02-27

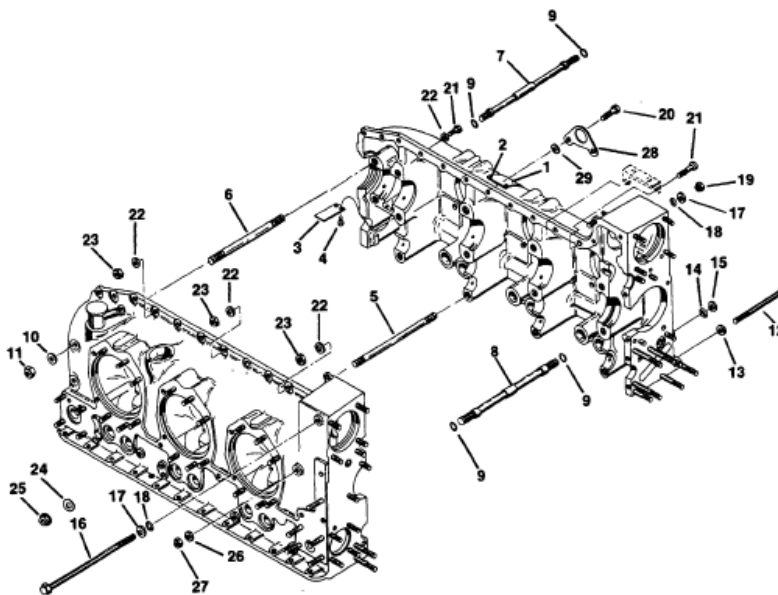


FIGURE 72-10-02. CRANKCASE ATTACHING PARTS

Renglón N°24. ARANDELA PLANA N/P: 2473
X30587A OCTUBRE 1989 FIG 72-20-05- 6 Y VARIOS

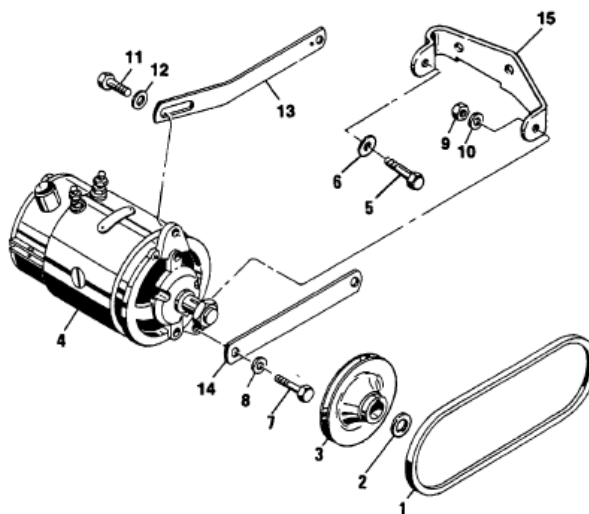
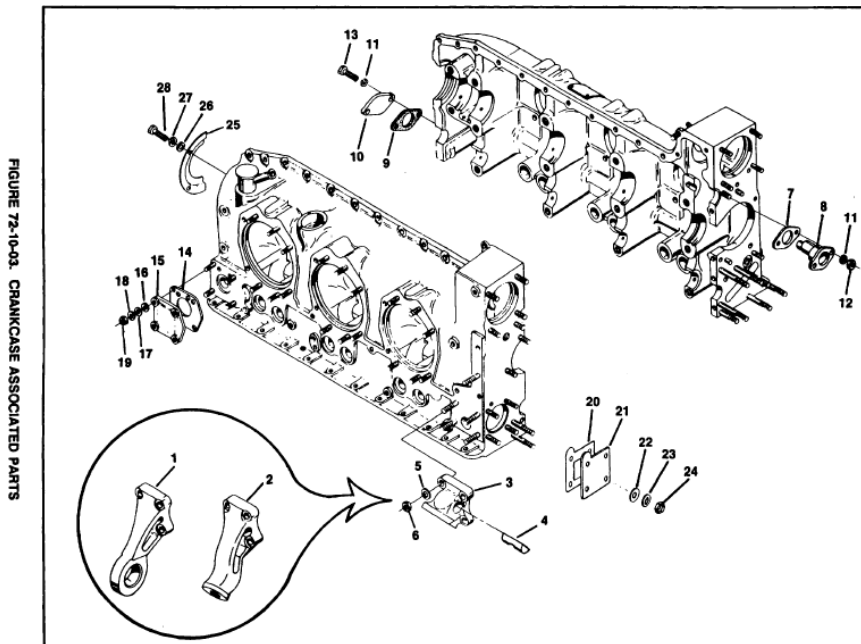


FIGURE 72-20-05. GENERATOR AND MOUNTING BRACKETS
MODELS O-470-A,B,E,G,J,K,P,R

PLIEGO DE BASES Y CONDICIONES PARTICULARES

ESPECIFICACIONES TÉCNICAS

Renglón N°25. ARANDELA PLANA N/P: 539058
 X30587A OCTUBRE 1989 FIG 72-10-03-05



Renglón N°26. ARANDELA PLANA N/P: 20522
 X30587A OCTUBRE 1989 FIG 72-50-03 - 4 Y VARIOS

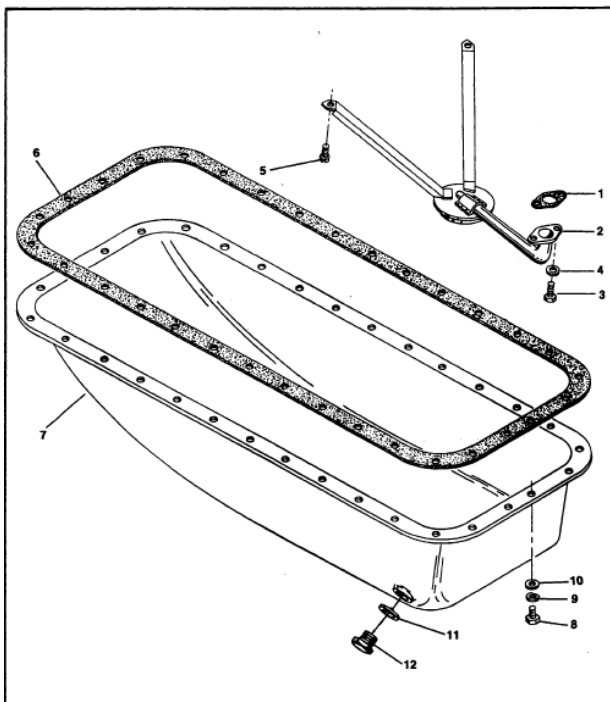


FIGURE 72-50-03. OIL SUMP
 MODELS 0-470-A,B,E,J,K,L,M,R,S,U

PLIEGO DE BASES Y CONDICIONES PARTICULARES

ESPECIFICACIONES TÉCNICAS

Renglón N°27. ARANDELA FRENO N/P: MS35337-44
 X30587A OCTUBRE 1990 FIG 72-20-08 - 3 Y VARIOS

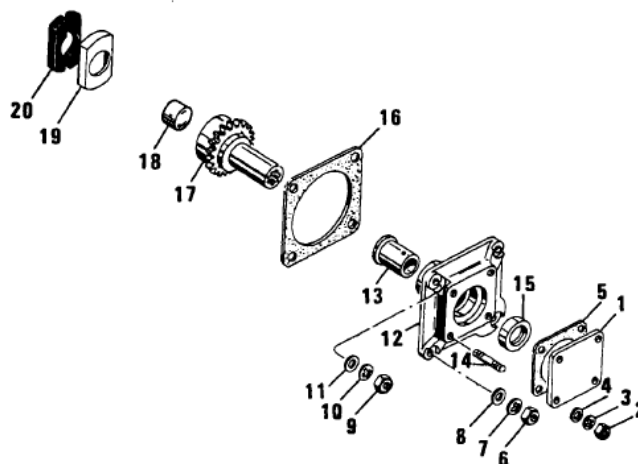


FIGURE 72-20-08. MAGNETO AND ACCESSORY DRIVES

Renglón N°28. BULON 1/4 20 X 7/8 N/P: 24835
 X30587A OCTUBRE 1991 FIG 75-00-01-13 Y VARIOS

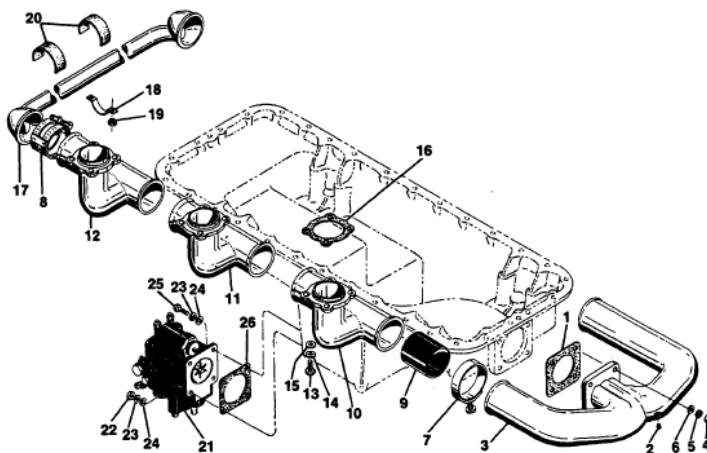
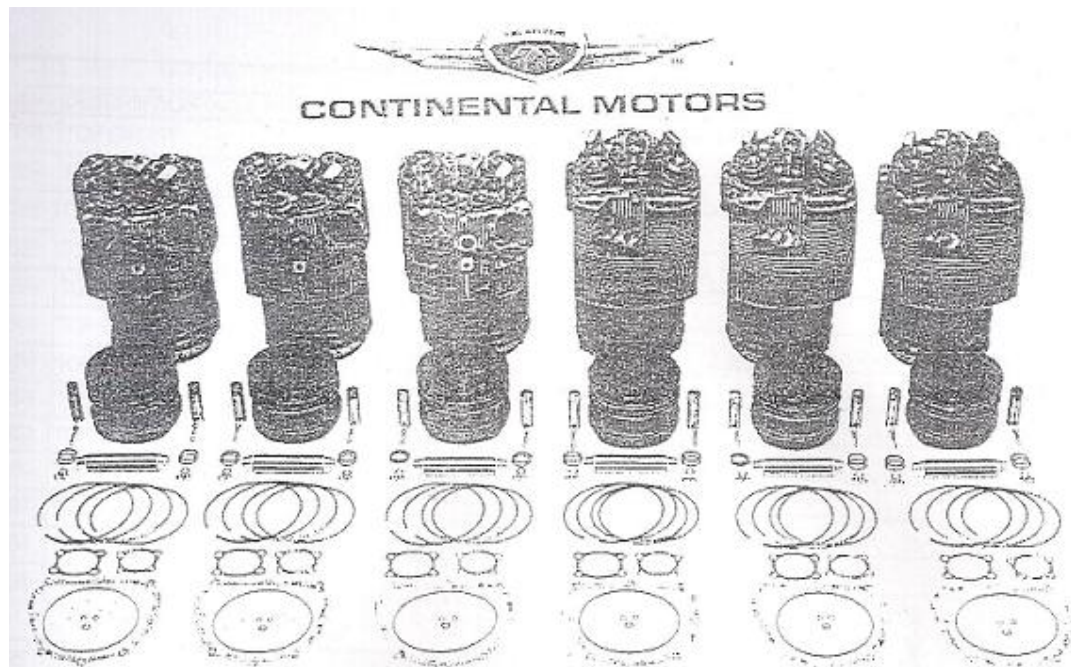


FIGURE 75-00-01. INDUCTION SYSTEM
 MODELS C-470-G,P

PLIEGO DE BASES Y CONDICIONES PARTICULARES

ESPECIFICACIONES TÉCNICAS

Reglón N°29. KIT CILINDROS N/P: EQ7020
INTRODUCING GENUINE CONTINENTAL PARTS KITS



TOP END OVERHAUL KIT

Factory new cylinder, pistons and rings, what better way to start your top overhaul! Continental provides genuine factory cylinders and puts them into one convenient kit to make getting started on a top overhaul even easier. And you have the additional confidence of Continental's TopCare™ warranty. All attractively priced and all inclusive. This kit includes the following:

- Cylinder And Valve Assembly
- Piston
- Ring Set
- Pin & Plug Assembly - Piston
- Washer, Thrust - Rocker Assembly
- Shaft - Rocker Assembly
- Screw - Rocker Assembly Shaft
- Washer - Rocker Assembly Shaft
- Nut - Exhaust
- Gasket Sets - Single Cylinder
- Chart - Kit Structure

EQ7020	TOP O/H-KIT	0470R, S, L, K, G, (EXCEPT G7, GCI, G10)
--------	-------------	--

PLIEGO DE BASES Y CONDICIONES PARTICULARES

ESPECIFICACIONES TÉCNICAS

Reglón N°30. PERNO DE PISTON N/P: 539667
X30587A OCTUBRE 1991 FIG 72-20-03-6

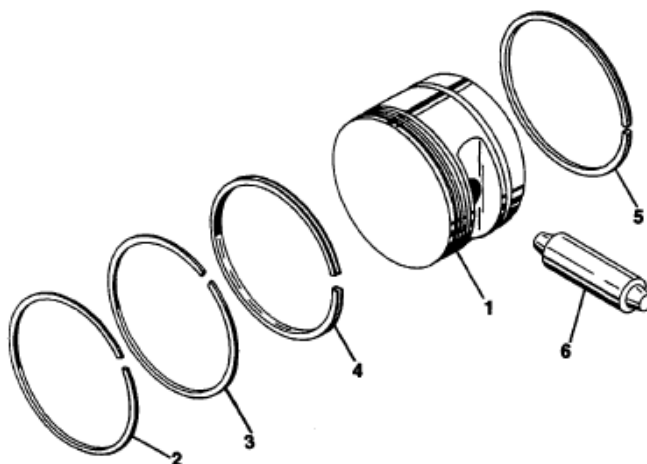


FIGURE 72-20-03. PISTON AND RING ASSEMBLY

Reglón N°31. COJINETE DE BIELA STD N/P:530383
X30587A OCTUBRE 1991 FIG 72-20-01-31

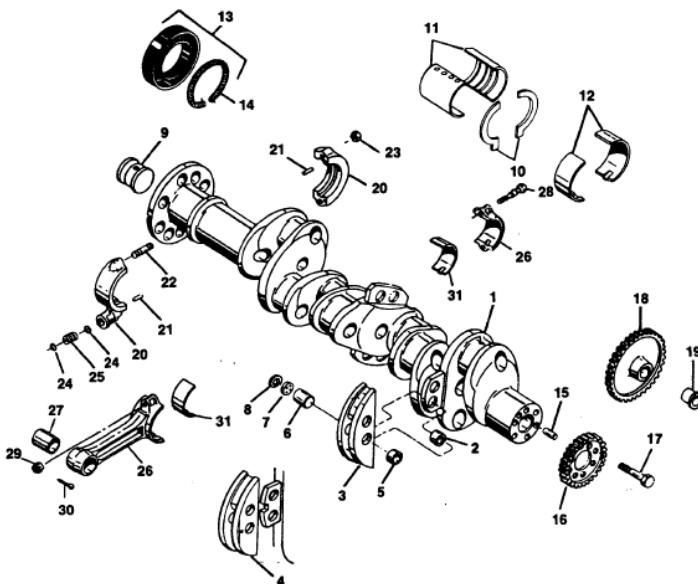


FIGURE 72-20-01 CRANKSHAFT GROUP

PLIEGO DE BASES Y CONDICIONES PARTICULARES

ESPECIFICACIONES TÉCNICAS

Renglón N°32. CONTRAPESO N/P: 639195
 X30587A OCTUBRE 1991 FIG 75-20-01-3

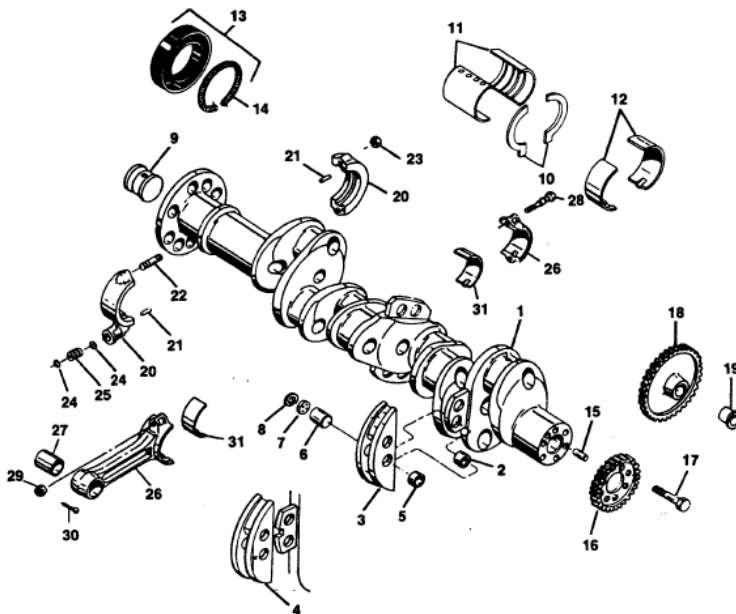


FIGURE 72-20-01 CRANKSHAFT GROUP

Renglón N°33. COJINETE FRONTAL STD N/P 633136
 X30587A OCTUBRE 1991 FIG 72-20-01-11

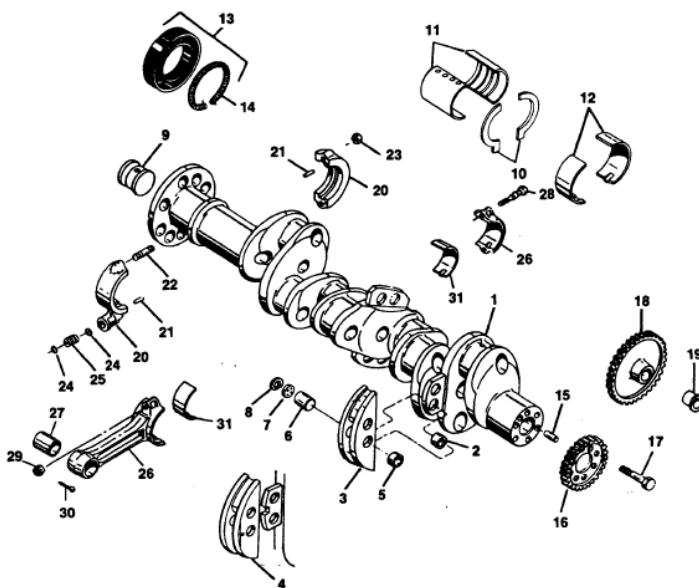


FIGURE 72-20-01 CRANKSHAFT GROUP

PLIEGO DE BASES Y CONDICIONES PARTICULARES

ESPECIFICACIONES TÉCNICAS

Renglón N°34. COJINETE FRONTAL M010 N/P 633136
 X30587A OCTUBRE 1991 FIG 72-20-01-11

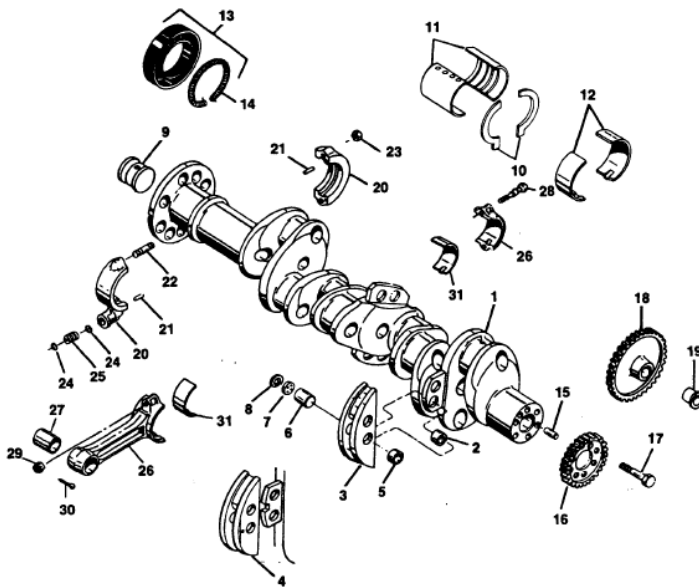


FIGURE 72-20-01 CRANKSHAFT GROUP

Renglón N°35. COJINETE POSTERIOR STD N/P: 642720
 X30587A OCTUBRE 1991 FIG 72-20-01-12

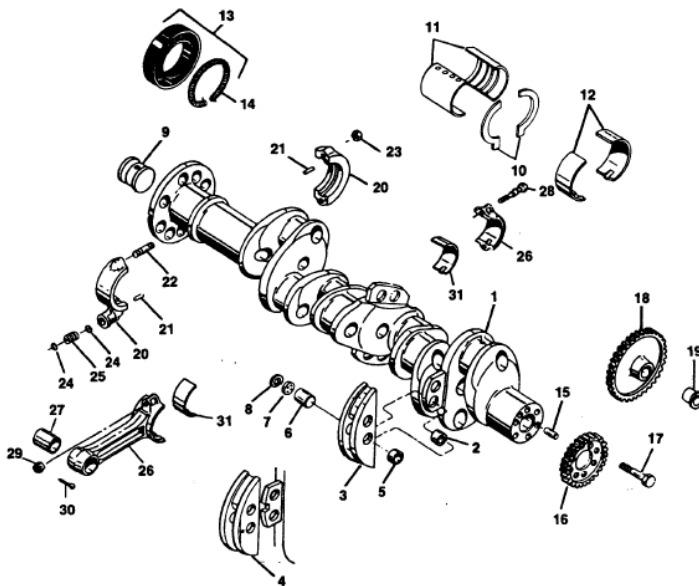
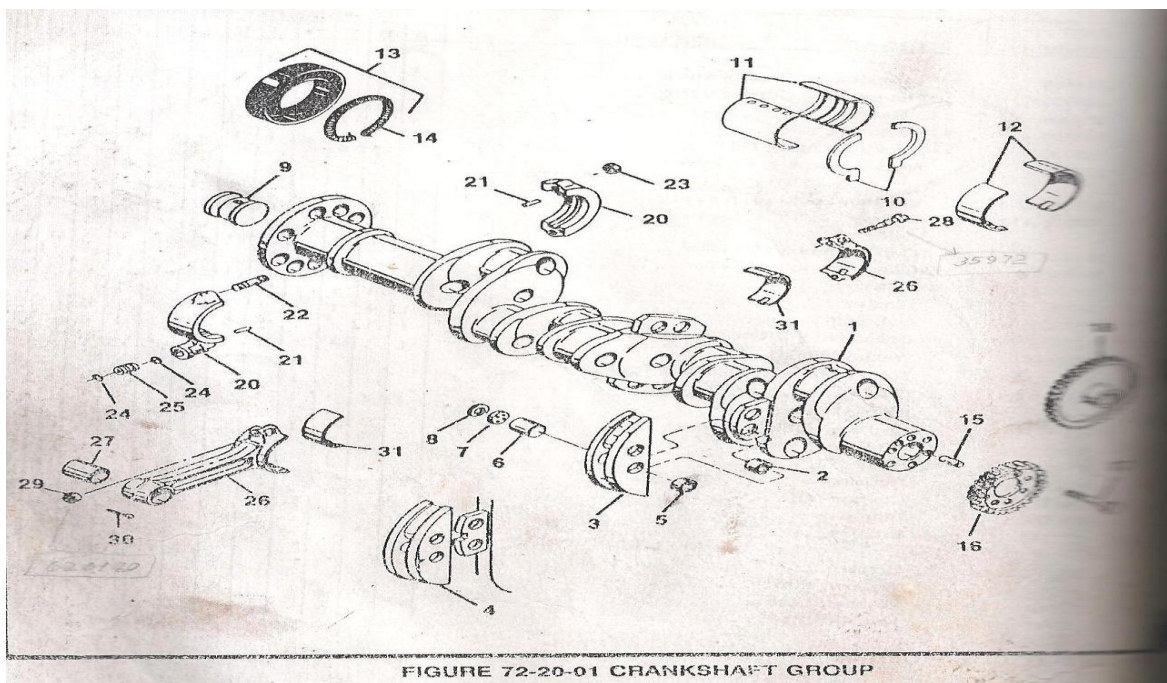


FIGURE 72-20-01 CRANKSHAFT GROUP

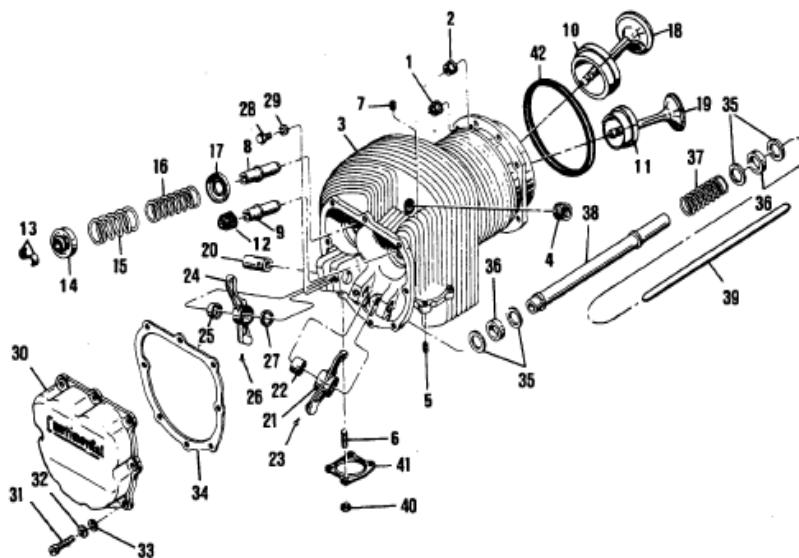
PLIEGO DE BASES Y CONDICIONES PARTICULARES

ESPECIFICACIONES TÉCNICAS

Renglón N°36. COJINETE POSTERIOR M010 N/P: 642720
 X30587A OCTUBRE 1991 FIG 70-20-01-12



Renglón N°37. VALVULA DE ESCAPE N/P: 655771
 X30587A OCTUBRE 1991 FIG 72-30-02-19



PLIEGO DE BASES Y CONDICIONES PARTICULARES

ESPECIFICACIONES TÉCNICAS

Renglón N°38. VALVULA DE ADMISION N/P: 655783
 X30587A OCTUBRE 1991 FIG 72-30-02-18

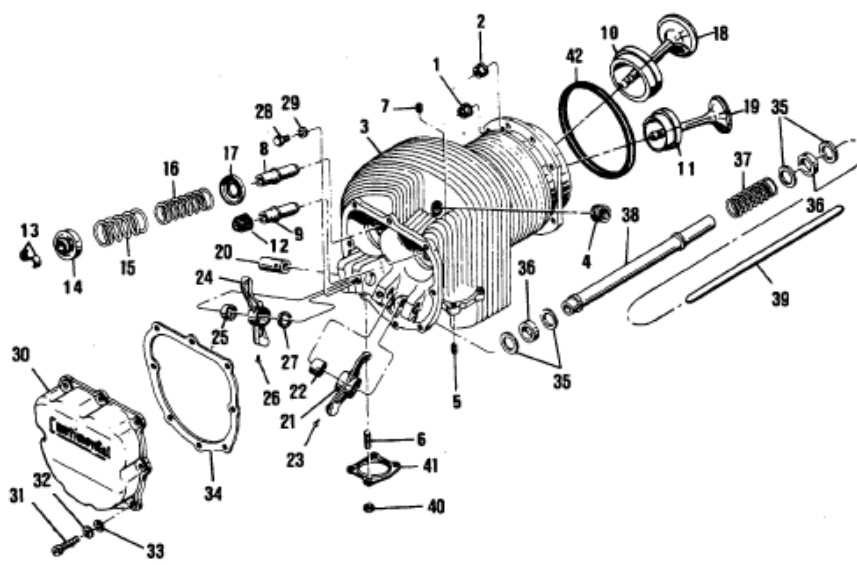


FIGURE 72-30-02. CYLINDER ASSEMBLY
 MODELS O-470-B,G,K,L,M,P,R,S,U

Renglón N°39. TAPON N/P: 21208A2
 X30587A OCTUBRE 1991 FIG 72-50-02-11

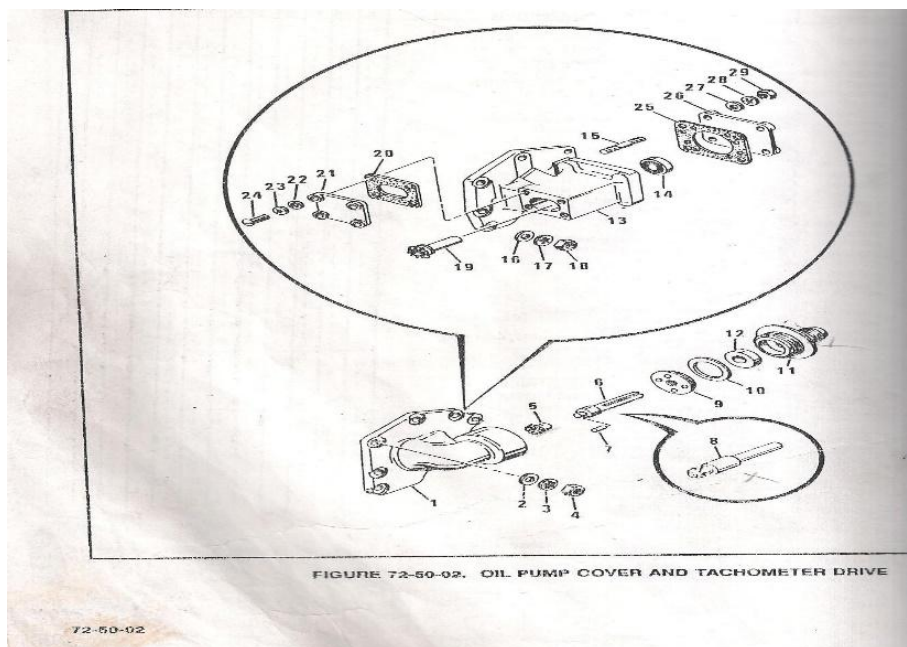
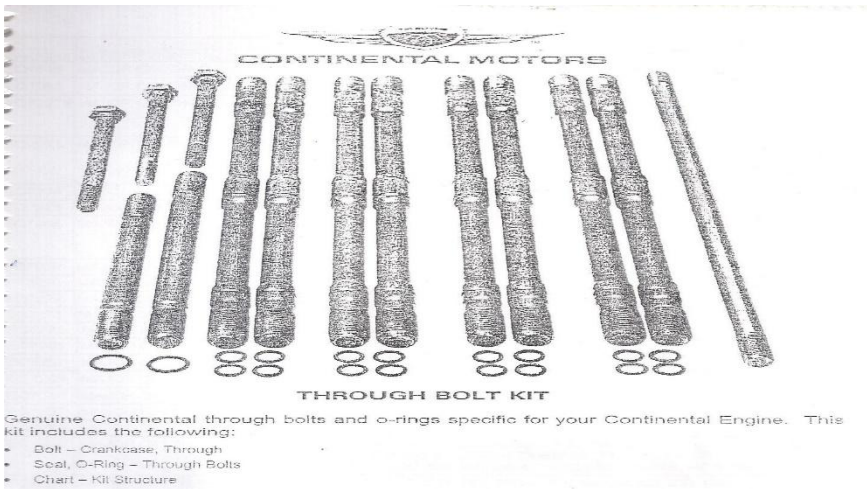


FIGURE 72-50-02. OIL PUMP COVER AND TACHOMETER DRIVE

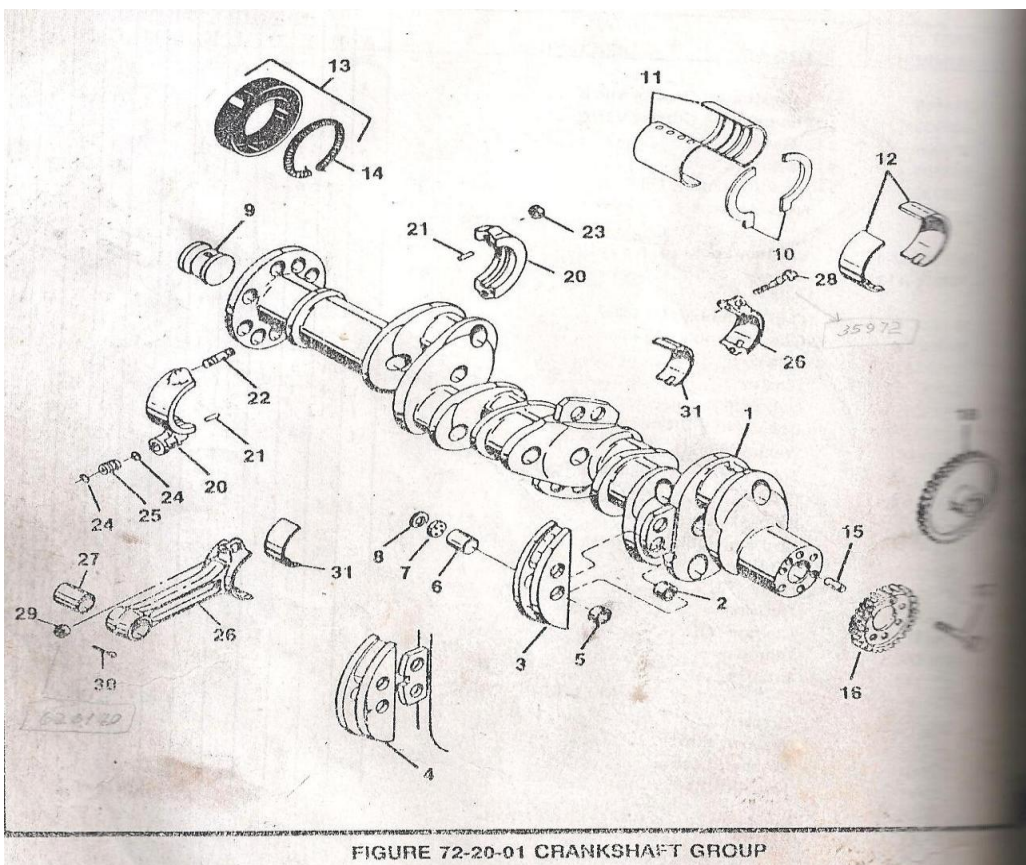
PLIEGO DE BASES Y CONDICIONES PARTICULARES

ESPECIFICACIONES TÉCNICAS

Renglón N°40. KIT DE ESPARRAGOS N/P: EQ7022
 INTRODUCING GENUINE CONTINENTAL PARTS KITS



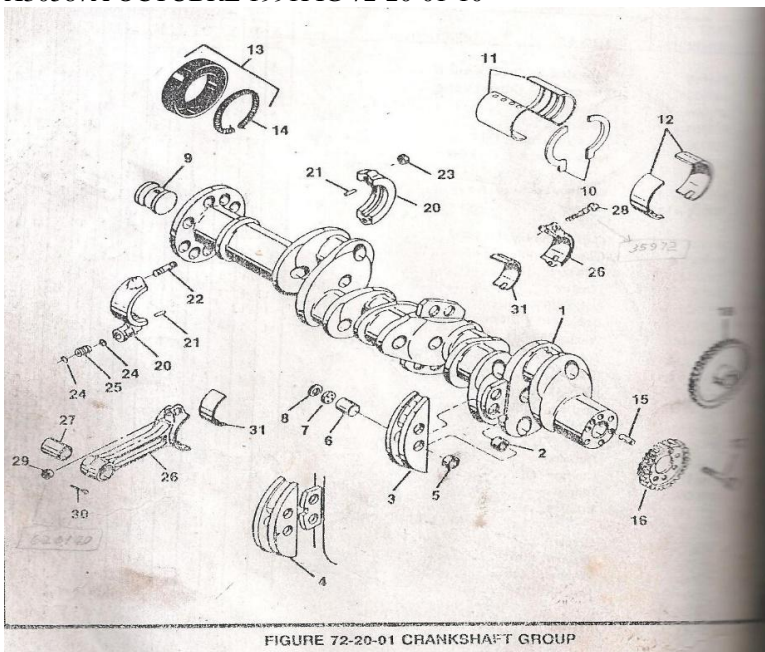
Renglón N°41. AXIALES N/P: 646288 P03
 X30587A OCTUBRE 1991 FIG 72-20-01-10



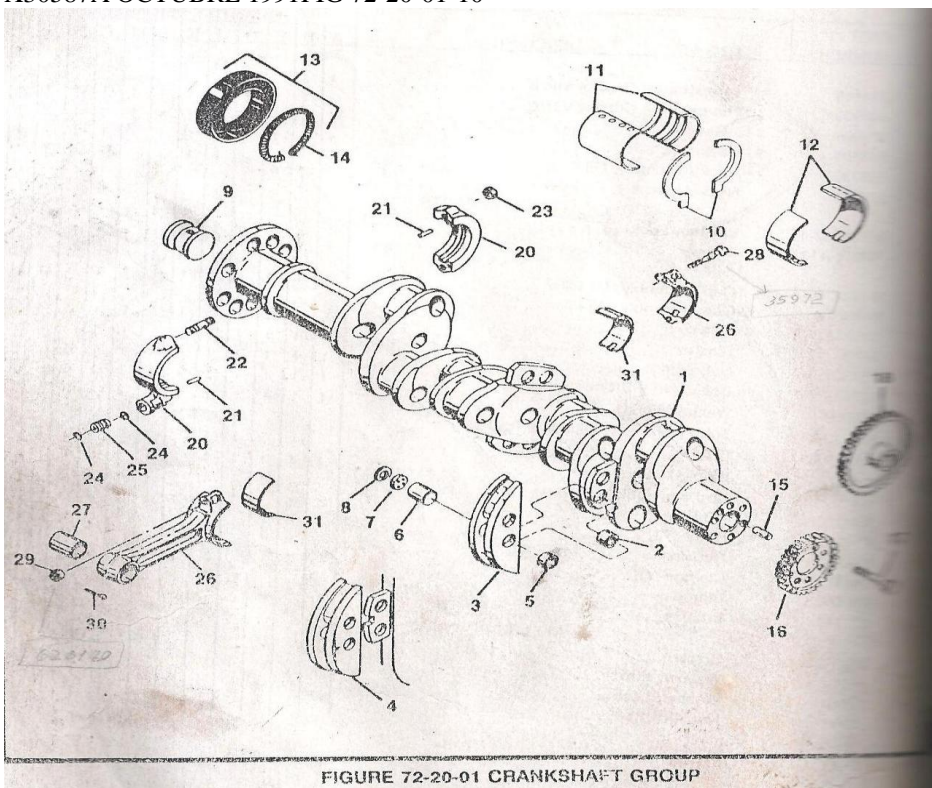
PLIEGO DE BASES Y CONDICIONES PARTICULARES

ESPECIFICACIONES TÉCNICAS

Renglón N°42. AXIALES N/P: 646288 P05
X30587A OCTUBRE 1991 FIG 72-20-01-10



Renglón N°43. AXIALES N/P: 646288 P07
X30587A OCTUBRE 1991 FIG 72-20-01-10



PLIEGO DE BASES Y CONDICIONES PARTICULARES

ESPECIFICACIONES TÉCNICAS

Renglón N°44. ARANDELA DE CUBRE VARILLA N/P: 534609
X30587A OCTUBRE 1989 FIG 72-20-02-35

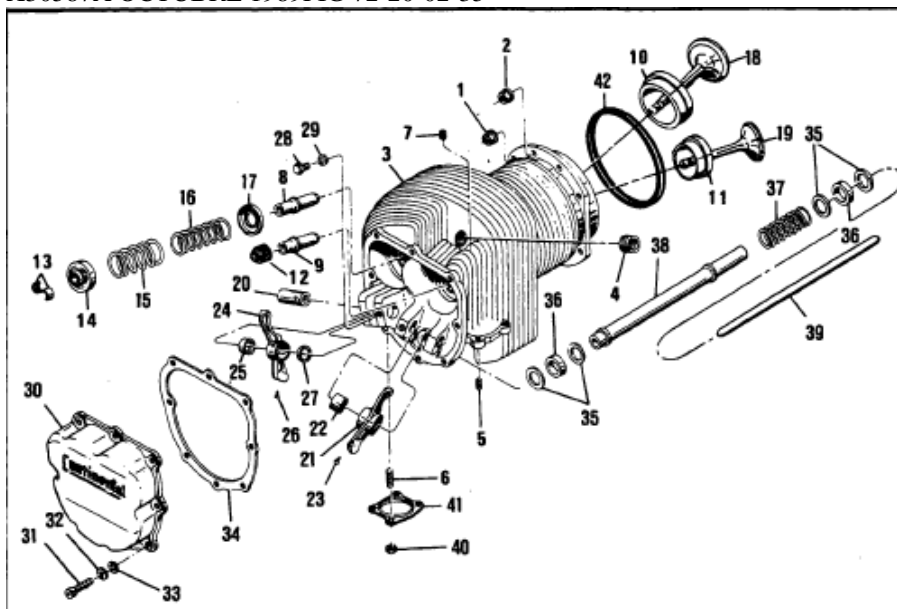


FIGURE 72-30-02. CYLINDER ASSEMBLY
MODELS O-470-B,G,K,L,M,P,R,S,U

Renglón N°45. BY-PASS VALV. PRESION N/P: 642336
X30587A OCTUBRE 1989 FIG 72-50-01-08

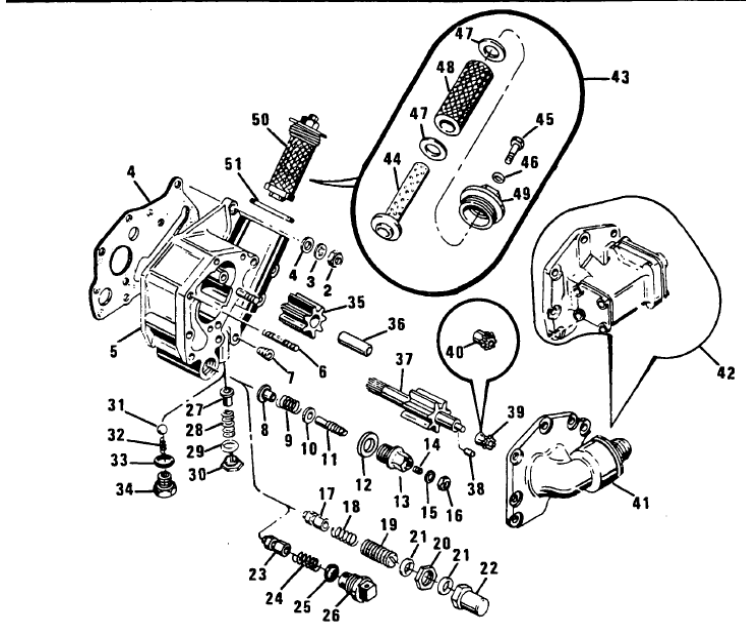


FIGURE 72-50-01. OIL PUMP ASSEMBLY

PLIEGO DE BASES Y CONDICIONES PARTICULARES

ESPECIFICACIONES TÉCNICAS

Renglón N°46. ARANDELA SUPLEMENTO N/P: MS35769-18
X30587A OCTUBRE 1989 FIG 72-50-01-29

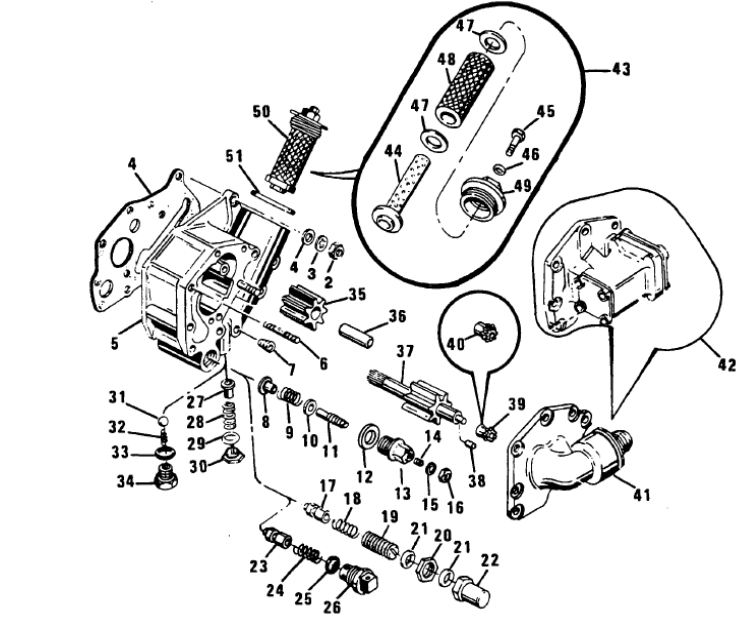


FIGURE 72-50-01. OIL PUMP ASSEMBLY

Renglón N°47. TORNILLO REG. DE PRES. ACEITE N/P: 642335
X30587A OCTUBRE 1989 FIG 72-50-01-11

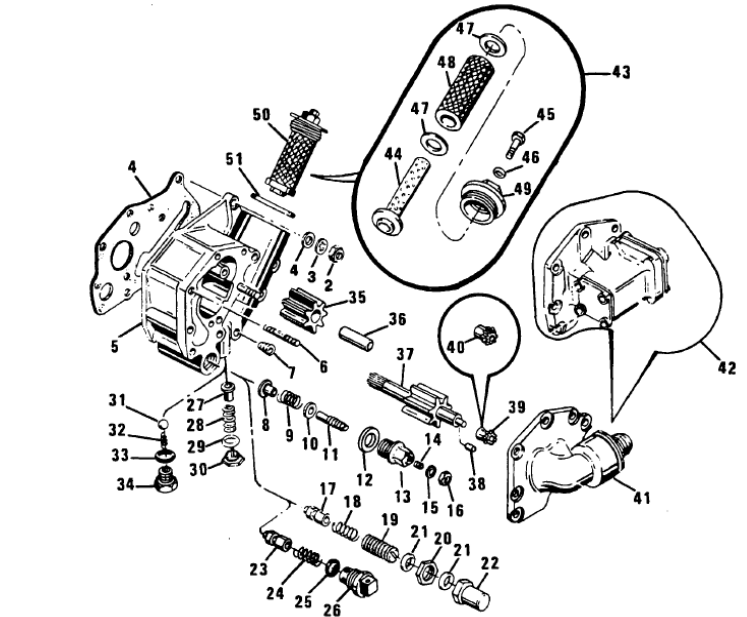


FIGURE 72-50-01. OIL PUMP ASSEMBLY

PLIEGO DE BASES Y CONDICIONES PARTICULARES

ESPECIFICACIONES TÉCNICAS

Renglón N°48. ARANDELA SELLO N/P: M535769-26
X30587A OCTUBRE 1989 FIG 72-50-01-12

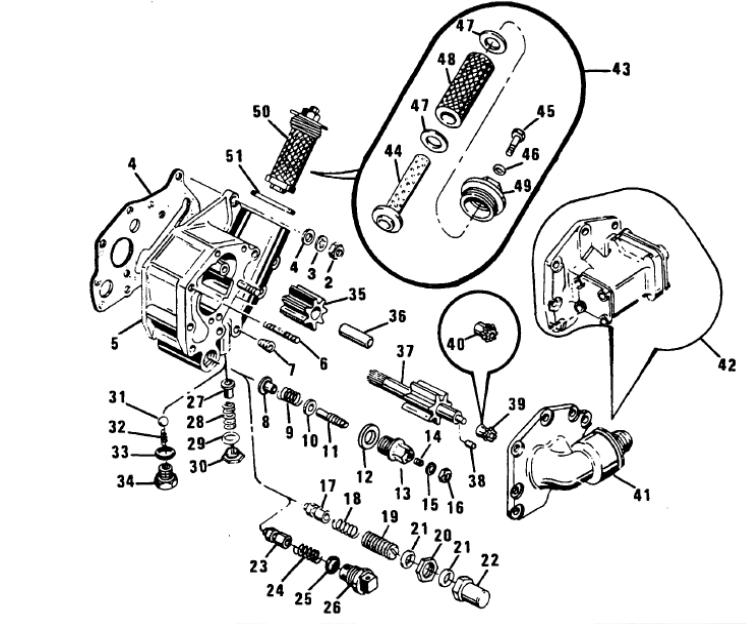


FIGURE 72-50-01. OIL PUMP ASSEMBLY

Renglón N°49. POLEA N/P: 534775
X30587A OCTUBRE 1989 FIG 72-20-04-49

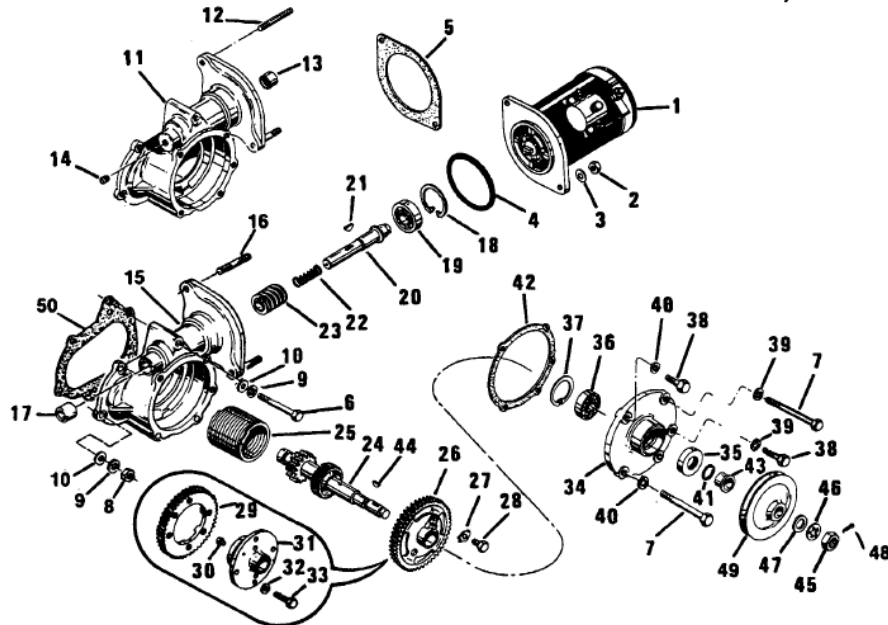


FIGURE 72-20-04. STARTER AND STARTER ADAPTER

PLIEGO DE BASES Y CONDICIONES PARTICULARES

ESPECIFICACIONES TÉCNICAS

Reglón N°50. CARTER DE ACEITE N/P: 539937
 X30587A OCTUBRE 1989 FIG 72-50-03-07

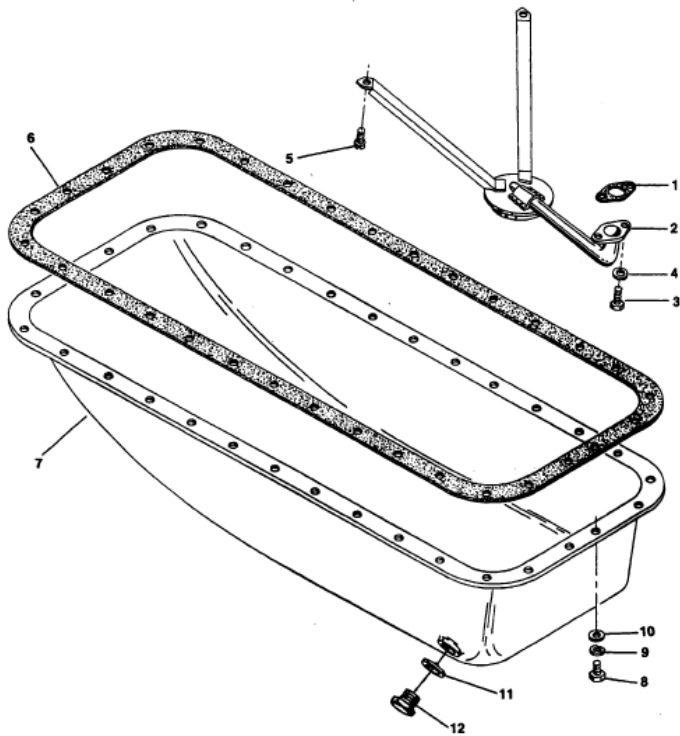


FIGURE 72-50-03. OIL SUMP
 MODELS 0-470-A,B,E,J,K,L,M,R,S,U

Reglón N°51. VALVULA CONTROL DE TEMP N/P: 649369-3
 X30587A OCTUBRE 1989 FIG 72-10-04-01

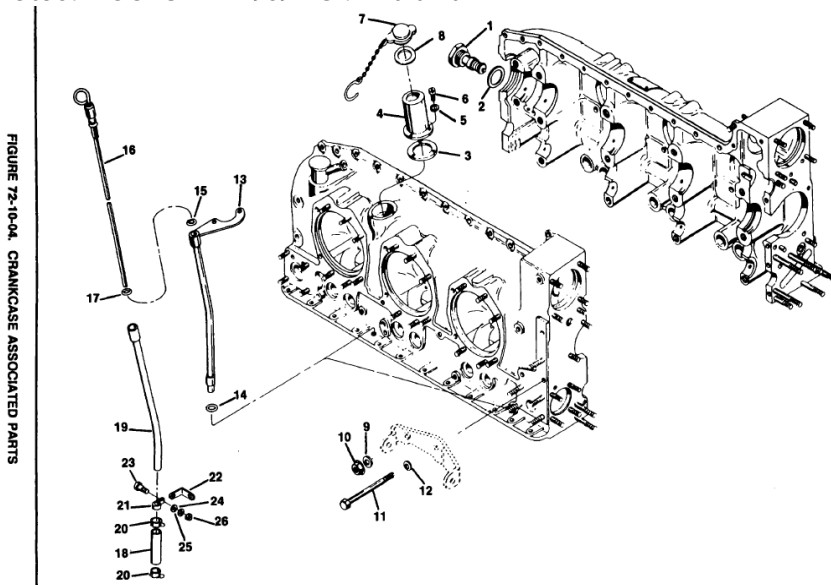
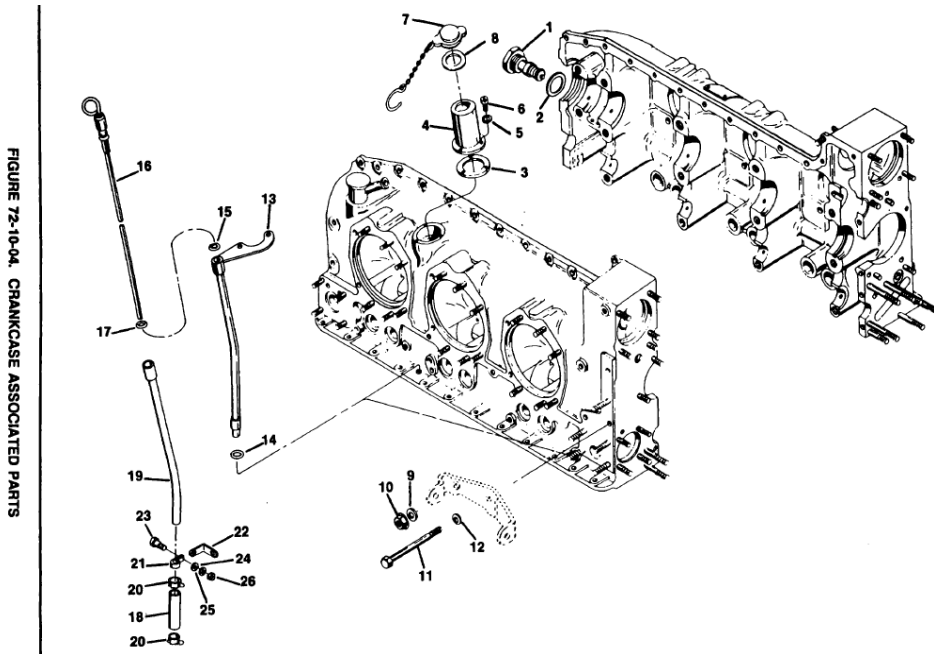


FIGURE 72-10-04. CRANKCASE ASSOCIATED PARTS

PLIEGO DE BASES Y CONDICIONES PARTICULARES

ESPECIFICACIONES TÉCNICAS

Reglón N°52. BULON CARTER 5/16 X 7/8 N/P: 530346
 X30587A OCTUBRE 1989 FIG 72-50-03-08



Reglón N°53. JUNTA PLACA RADIADOR N/P: 625303
 X30587A OCTUBRE 1989 FIG 72-50-06-12

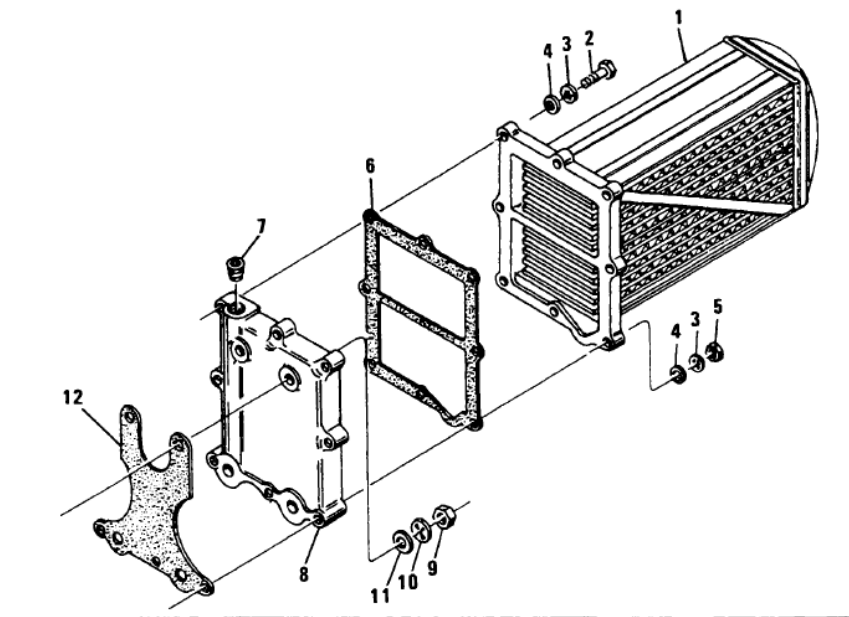
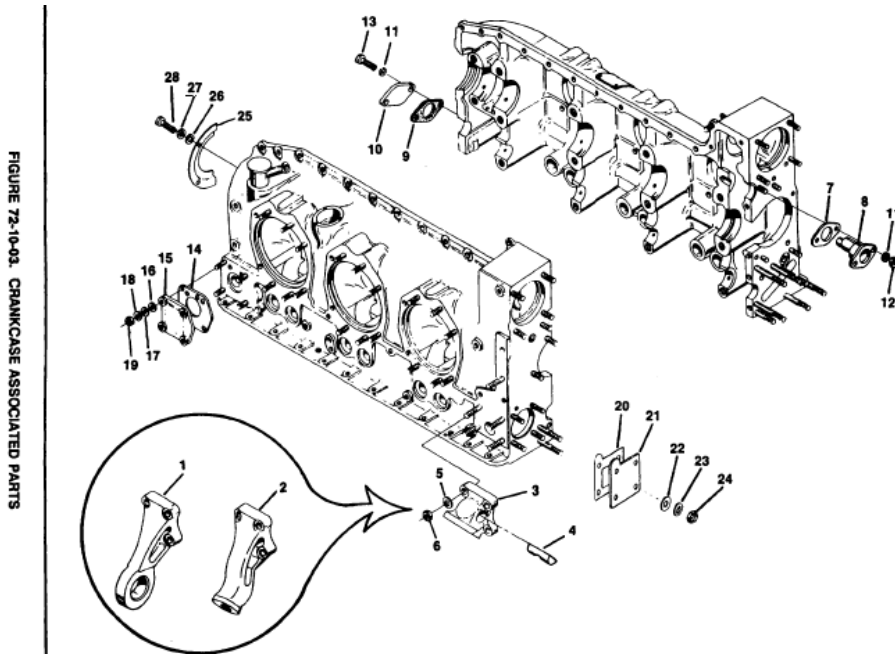


FIGURE 72-50-06. OIL COOLER
 MODELS O-470-G,L,P,R,S,U

PLIEGO DE BASES Y CONDICIONES PARTICULARES

ESPECIFICACIONES TÉCNICAS

Reglón N°54. BULON N/P: 628321-38
 X30587A OCTUBRE 1989 FIG 72-10-03-28



Reglón N°55. PERNO CONTRAPESO N/P: 630261-31
 X30587A OCTUBRE 1989 FIG 72-20-01-06

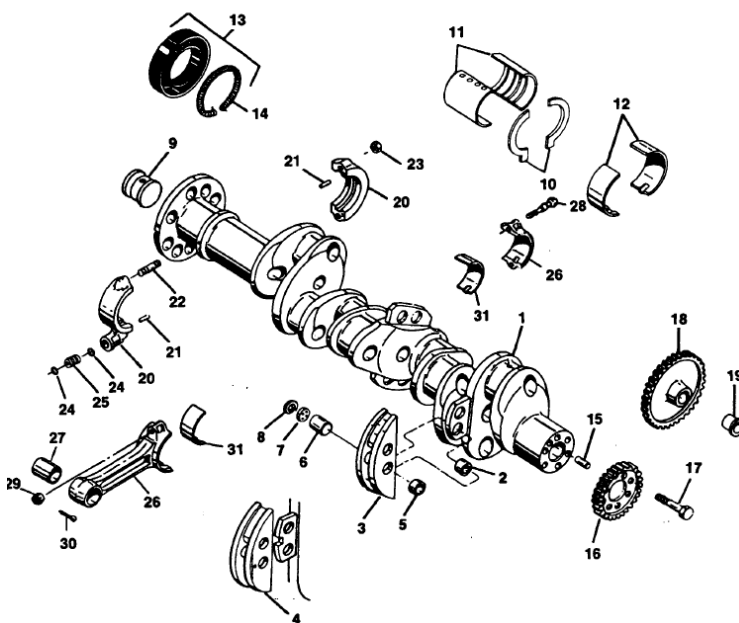


FIGURE 72-20-01 CRANKSHAFT GROUP

PLIEGO DE BASES Y CONDICIONES PARTICULARES

ESPECIFICACIONES TÉCNICAS

Renglón N°56. ESPARRAGO N/P: 630989
 X30587A OCTUBRE 1989 FIG 72-20-07-06

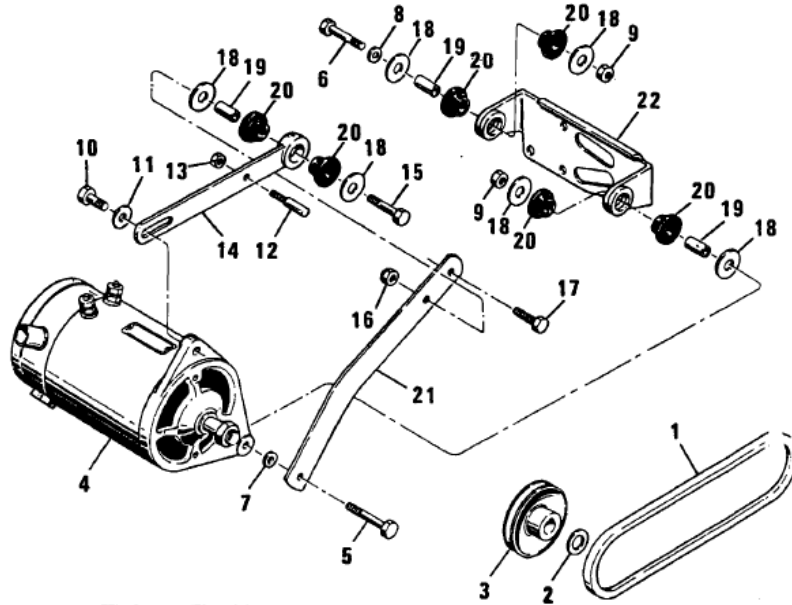


FIGURE 72-20-06. GENERATOR AND MOUNTING BRACKETS MODEL 0-470-M

Renglón N°57. ARANDELA N/P: 633062
 X30587A OCTUBRE 1989 FIG 72-20-07-12

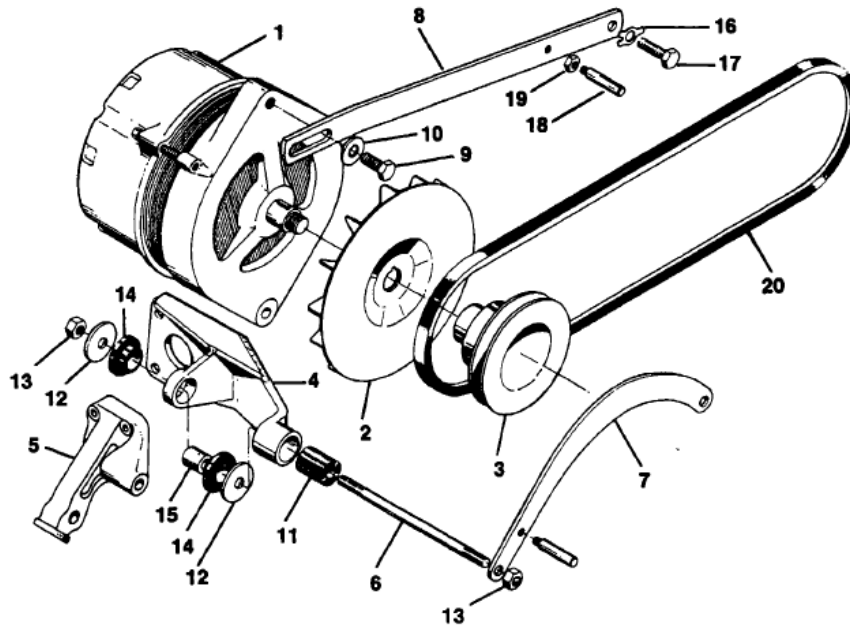


FIGURE 72-20-07. ALTERNATOR (OPTIONAL EQUIPMENT) ALL MODELS

PLIEGO DE BASES Y CONDICIONES PARTICULARES

ESPECIFICACIONES TÉCNICAS

Reglón N°58. CONJUNTO SOPORTE ALTERNADOR N/P: 631200
X30587A OCTUBRE 1989 FIG 72-20-07-07

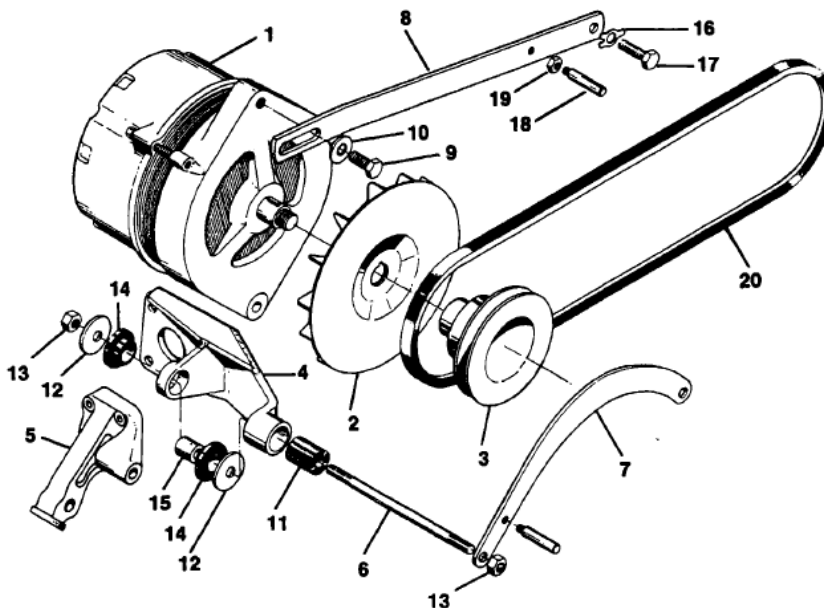


FIGURE 72-20-07. ALTERNATOR (OPTIONAL EQUIPMENT) ALL MODELS

Reglón N°59. JUNTA BASE DE CILINDRO N/P: 532200
X30587A OCTUBRE 1989 FIG 72-30-02-42

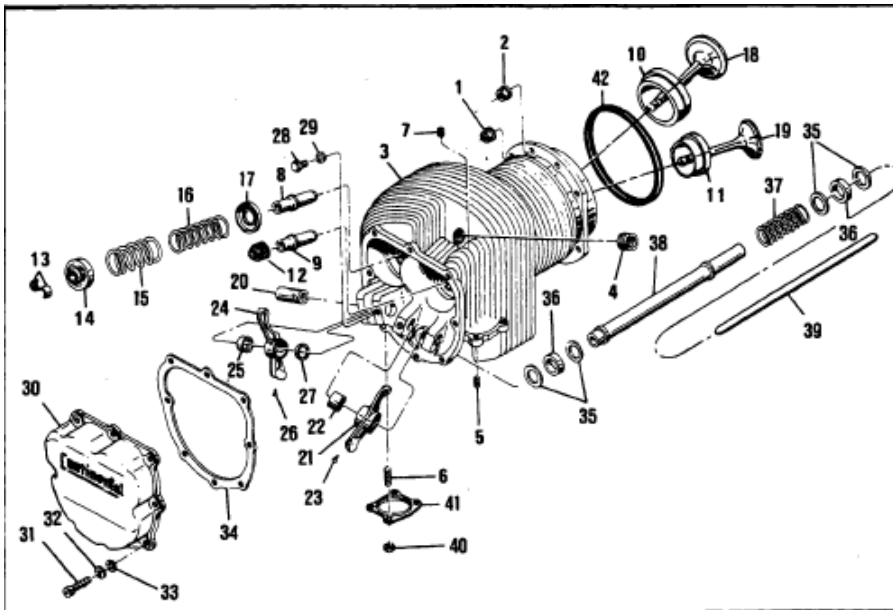


FIGURE 72-30-02. CYLINDER ASSEMBLY
MODELS O-470-B,G,K,L,M,P,R,S,U

PLIEGO DE BASES Y CONDICIONES PARTICULARES

ESPECIFICACIONES TÉCNICAS

Renglón N°60. FILTRO DE ACEITE N/P: 538727
X30587A OCTUBRE 1989 FIG 72-50-01-43

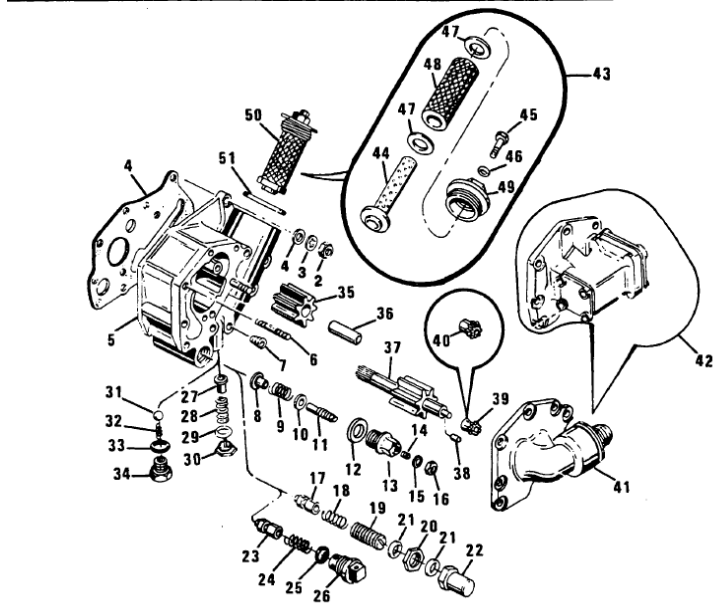


FIGURE 72-50-01. OIL PUMP ASSEMBLY

Renglón N°61. COJINETE DE BIELA N/P: SA530383
X30587A OCTUBRE 1991 FIG 72-20-01-31

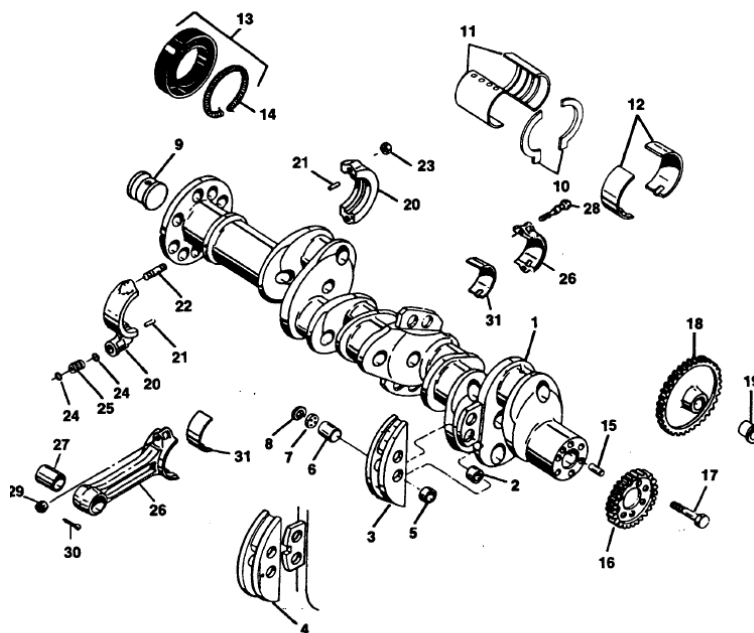


FIGURE 72-20-01 CRANKSHAFT GROUP

PLIEGO DE BASES Y CONDICIONES PARTICULARES

ESPECIFICACIONES TÉCNICAS

Renglón N°62. CUERPO VALVULA ALIVIO N/P: 631995
 X30587A OCTUBRE 1989 FIG 72-50-01-30

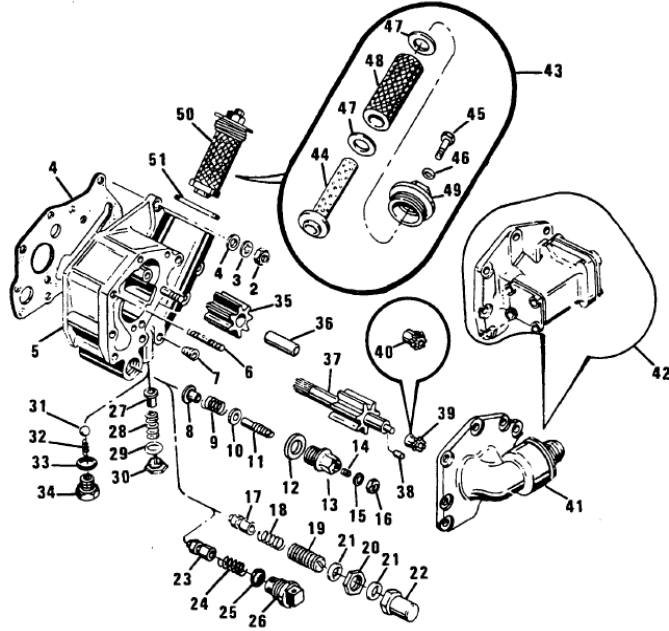


FIGURE 72-50-01. OIL PUMP ASSEMBLY

Renglón N°63. RESORTE VALVULA ALIVIO N/P: 631478
 X30587A OCTUBRE 1989 FIG 72-50-01-28

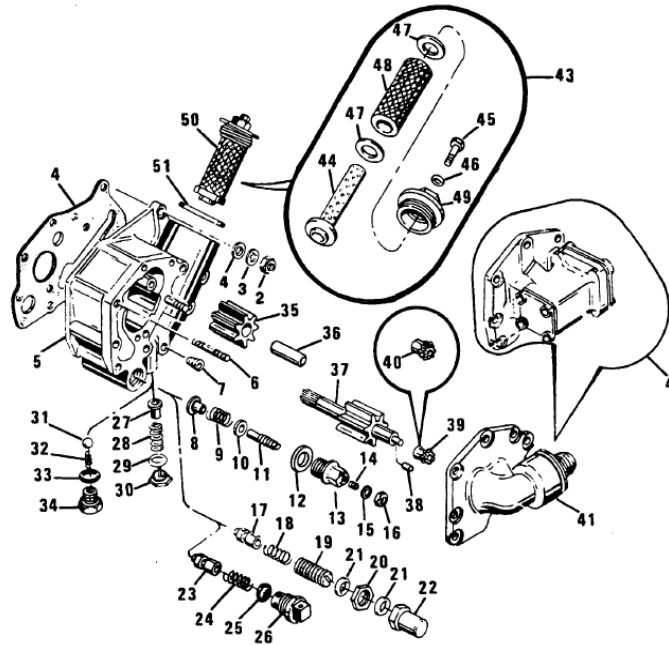


FIGURE 72-50-01. OIL PUMP ASSEMBLY

PLIEGO DE BASES Y CONDICIONES PARTICULARES

ESPECIFICACIONES TÉCNICAS

Renglón N°64. BULON 5/16 X 3-5/8 N/P: 538999
 X30587A OCTUBRE 1989 FIG 8-1 ITEM 33

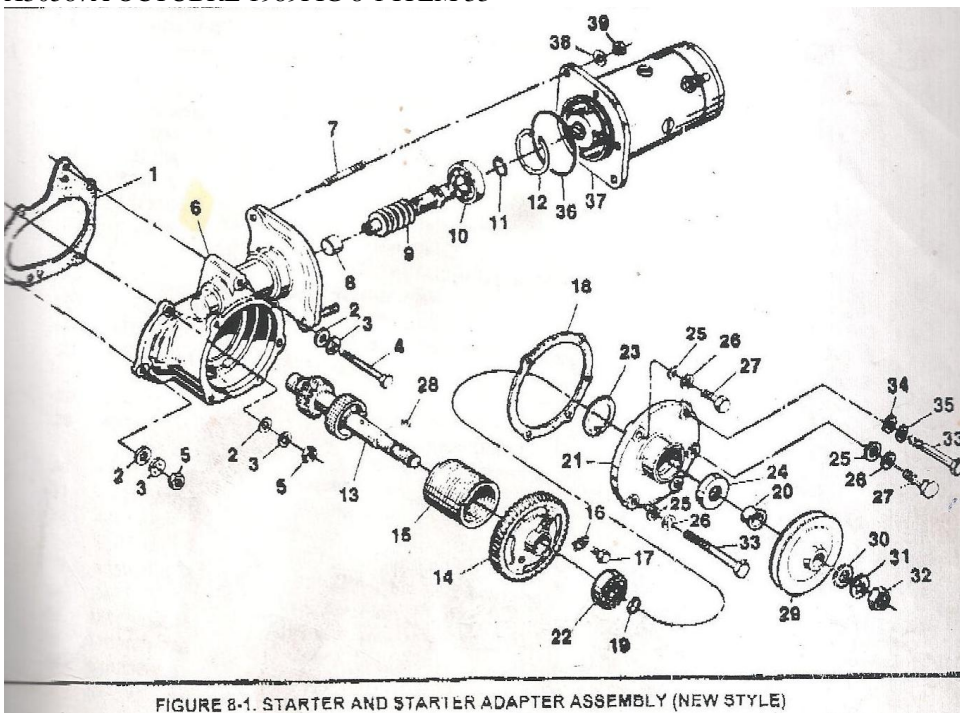


FIGURE 8-1. STARTER AND STARTER ADAPTER ASSEMBLY (NEW STYLE)

Renglón N°65. RESORTE N/P: 643109
 X30587A OCTUBRE 1989 FIG 8-1 ITEM 15

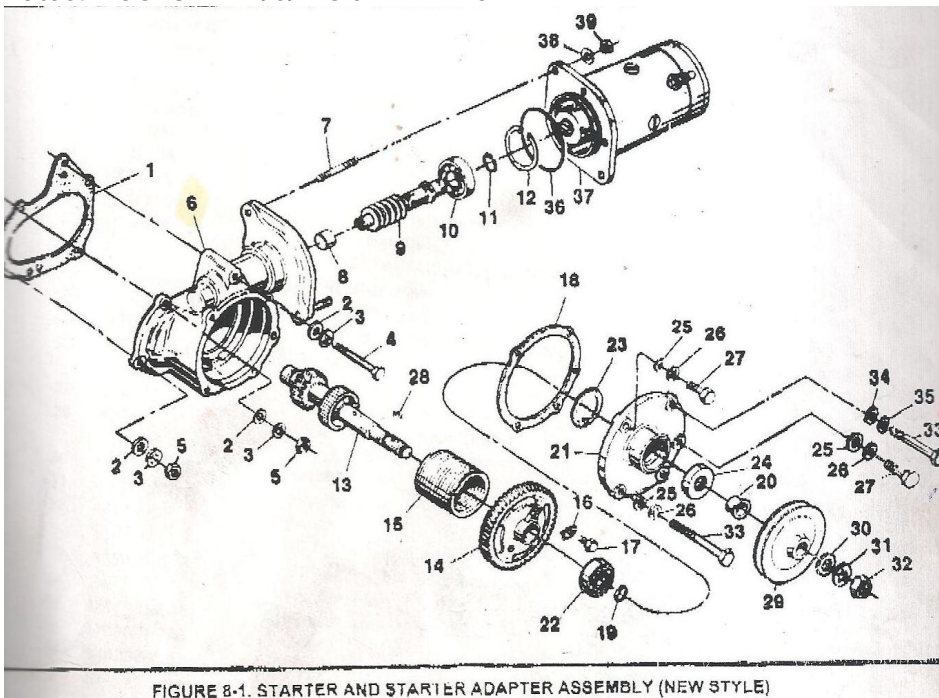


FIGURE 8-1. STARTER AND STARTER ADAPTER ASSEMBLY (NEW STYLE)

PLIEGO DE BASES Y CONDICIONES PARTICULARES

ESPECIFICACIONES TÉCNICAS

Renglón N°66. CUERPO DE VAL. PRESION N/P: 642224
X30587A OCTUBRE 1989 FIG 72-50-01-13

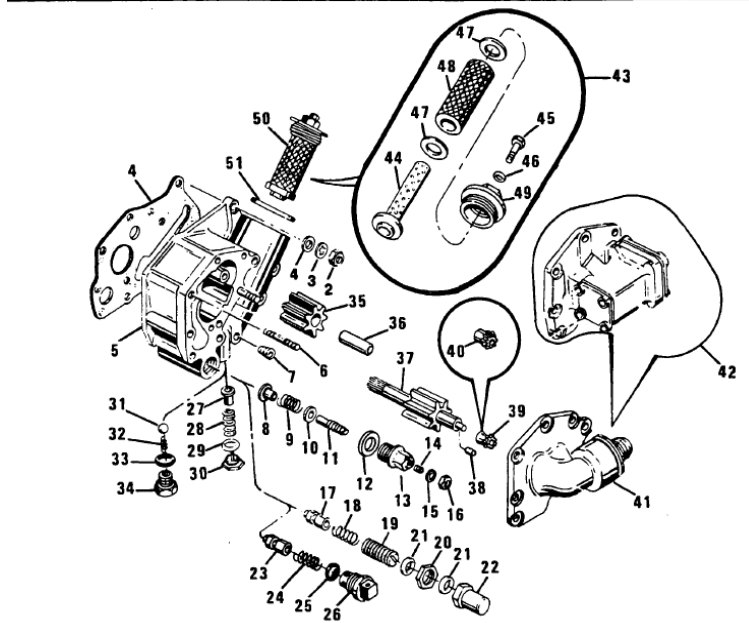


FIGURE 72-50-01. OIL PUMP ASSEMBLY

Renglón N°67. RESORTE VALV. PRESION N/P: 634150
X30587A OCTUBRE 1989 FIG 72-50-01-09

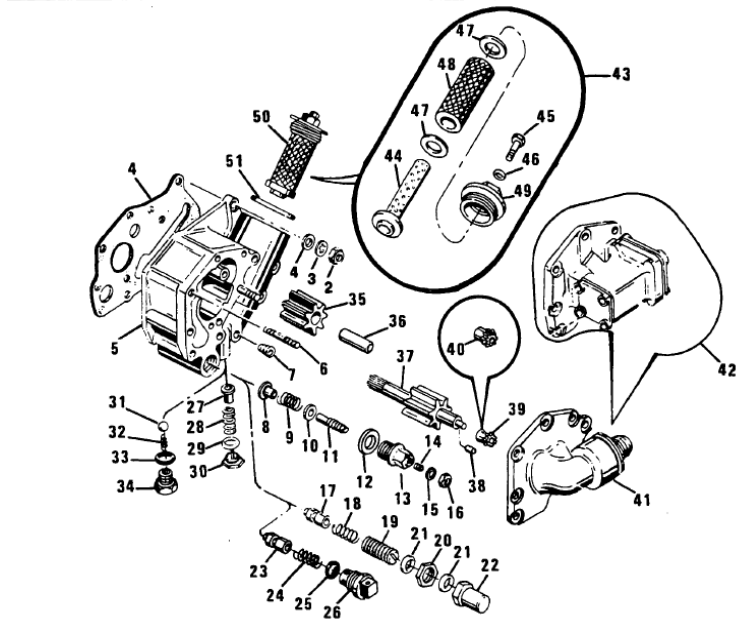


FIGURE 72-50-01. OIL PUMP ASSEMBLY

PLIEGO DE BASES Y CONDICIONES PARTICULARES

ESPECIFICACIONES TÉCNICAS

Reglón N°68. BULON N/P: AM75A15
X30587A OCTUBRE 1989 FIG 75-00-02-11

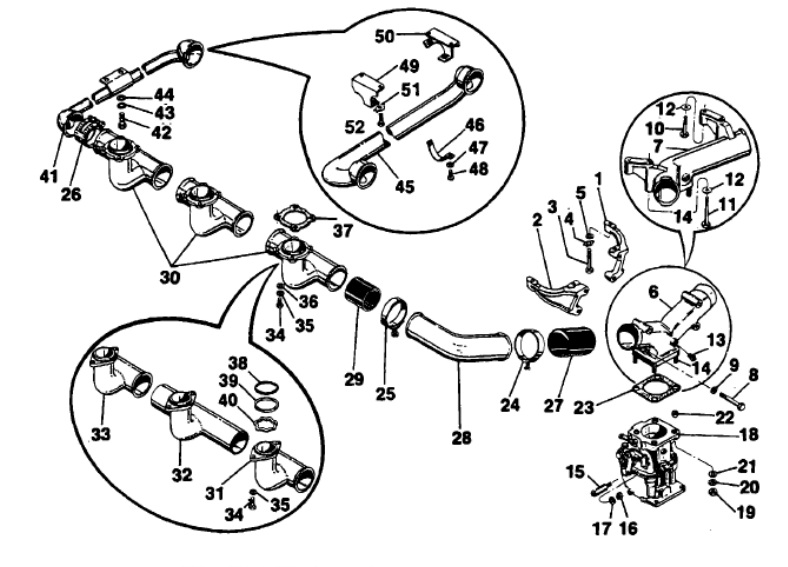


FIGURE 75-00-02. INDUCTION SYSTEM
MODELS 0-470-A,J,K,L,R,S,U

Reglón N°69. GEAR N/P: D20887
OVERHAUL – PART MCCAULEY 780401

Reglón N°70. FLYWEIGHT N/P: B-20889
OVERHAUL – PART MCCAULEY 780401

Reglón N°71. PIN N/P: B-20888
OVERHAUL – PART MCCAULEY 780401

Reglón N°72. FITTING N/P: A20265
OVERHAUL – PART MCCAULEY 78401

Reglón N°73. TERMINAL DE ARNES N/P: XH3881
SERVICE SUPPORT MANUAL X44001 REV 4

REGLÓN N° 74: TORNILLO
DESIGNACIÓN: SCREW, CYLINDER ATTACHING (N/P: A-1635-70). NNE: 5305-00-103-2989

REGLÓN N° 75. ARO CILINDRO MONTAJE
DESIGNACIÓN: RING CYLINDER MOUNTING (N/P: B-6631).NNE:1610-FA-047-0091

REGLÓN N° 76: TUBO CILINDRO MONTAJE
TUBE CYLINDER MOUNTIN (N/P B-4354-1) NNE: 4720-FA-050-3426

PLIEGO DE BASES Y CONDICIONES PARTICULARES

ESPECIFICACIONES TÉCNICAS

REGLÓN N° 77: TORNILLO PESO BALANCEO

DESIGNACIÓN: SCREW, BALANCE WEIGHT (N/P A-1635-36) NNE: 5305-00-145-6971

REGLÓN N° 78: TORNILLO PESO BALANCEO

DESIGNACIÓN: SCREW, BALANCE WEIGHT (N/P: A-1635-57) NNE: 5305-00-145-7012

REGLÓN N° 79: TUERCA AUTO FRENANTE

DESIGNACIÓN: NUT, SELF-LOCKING (N/P: A-1639-23) NNE: 5310-29-A00-1979

REGLÓN N° 80: PESO BALANCEO

DESIGNACIÓN: BALANCE WEIGHT (N/P B-5525-1) NNE: 1610-FA-047-2213

REGLÓN N° 81: PESO BALANCEO

DESIGNACIÓN: BALANCE WEIGHT (N/P: B-5525-2 NNE: 1610-FA-047-2214

REGLÓN N° 82: PESO BALANCEO

DESIGNACIÓN: BALANCE WEIGHT (N/P: B-5525-3 NNE: 1610-FA-047-2215

REGLÓN N° 83: JUNTA CILINDRO

DESIGNACIÓN: GASKET, CILINDER (N/P: B-6480) NNE: 5330-29-A00-1964

REGLÓN N° 84: ARO RETENCION

DESIGNACIÓN: RETAINING RING, EXTERNAL (N/P: A-1636-7) NNE: 5325-00-052-5414

REGLÓN N° 85: ARO DE GOMA

DESIGNACIÓN: O-RING, PISTON TO CYLINDER (N/P: A-1633-12) NNE: 5330-FA-047-0110

REGLÓN N° 86: PERNO

DESIGNACIÓN: ROLL PIN (N/P: A-3150-5) NNE: 5306-29-A00-1949

REGLÓN N° 87: BIELETA ACTUADOR

DESIGNACIÓN: LINK, BLADE ACTUATING (N/P: A-3902) NNE: 1680-29-A00-1973

REGLÓN N° 88: ARO DE GOMA

DESIGNACIÓN: O-RING, TUBE TO PISTON (N/P: A-1633-9) NNE: 5331-00-250-1218

REGLÓN N° 89: GUIA RESORTE

DESIGNACIÓN: GUIDE, SPRING (N/P: A-3124) NNE: 1610-00-240-9622

REGLÓN N° 90: ARANDELA DE FIBRA

DESIGNACIÓN: WASHER, FIBER (N/P: A-2351) NNE: 5310-00-124-3934

REGLÓN N° 91: ARO DE GOMA

DESIGNACIÓN: O-RING, TUBE TO HUB (N/P: A-1633-9) NNE: 5331-00-250-1218

REGLÓN N° 92: TORNILLO DE RANURA

DESIGNACIÓN: SCREW, SLOT BLOCK (N/P: A-1635-86) NNE: 5305-FA-047-0106

REGLÓN N° 93: ARO SELLADOR

DESIGNACIÓN: STAT-O-SEAL (N/P: A-1750-4) NNE: 5330-29-A00-1991

PLIEGO DE BASES Y CONDICIONES PARTICULARES

ESPECIFICACIONES TÉCNICAS

REGLÓN N° 94: ARO DE GOMA

DESIGNACIÓN: O-RING, SLOT BLOCK (N/P: A-1633-58) NNE: 5331-29-A00-1992

REGLÓN N° 95: CONJUNTO CUBO

DESIGNACIÓN: HUB ASSEMBLY (N/P: D-7292) NNE: 1610-FA-047-0103

REGLÓN N° 96: ESPARRAGO MONTAJE CUBO

DESIGNACIÓN: STUD, HUB MOUNTING (N/P: B-3921) NNE: 5307-00-406-5692

REGLÓN N° 97: PERNO GUIA CUBO

DESIGNACIÓN: DOWEL, HUB ALIGNMENT (N/P: A-4001) NNE: 5315-00-488-4397

REGLÓN N° 98: TAPON

DESIGNACIÓN: PIPE PLUG (N/P: A-4714) NNE: 4730-FA-047-0095

REGLÓN N° 99: ARO DE GOMA

DESIGNACIÓN: O-RING, BLADE TO HUB (N/P: A-1633-109) NNE: 5331-FA-047-0114

REGLÓN N° 100: RETEMEDOR PARTIDO

DESIGNACIÓN: RETAINER SPLIT (N/P: C-3903) NNE: 5365-01-574-5778

REGLÓN N° 101: BOLILLERO DE PALA

DESIGNACIÓN: BEARING BLADE RETENTION (N/P: C-3411) NNE: 3110-01-574-5790

REGLÓN N° 102: BOLILLA

DESIGNACIÓN: BALL, BEARING (N/P: A-1634-6) NNE: 5310-FA-050-3922

REGLÓN N° 103: SEPARADOR

DESIGNACIÓN: SEPARATOR, BALL (N/P: B-4014) NNE: 5365-01-574-5624

REGLÓN N° 104: PORTA SUPLEMENTO

DESIGNACIÓN: SHIM CARRIER (N/P: B-4649) NNE: 5365-01-574-5624

REGLÓN N° 105: SUPLEMENTO PARTIDO

DESIGNACIÓN: SPLIT SHIM (N/P: B-4277-3) NNE: 5365-01-574-5530

REGLÓN N° 106: SUPLEMENTO PARTIDO

DESIGNACIÓN: SPLIT SHIM (N/P: B-4277-6) NNE: 5365-01-574-5536

REGLÓN N° 107: SUPLEMENTO PARTIDO

DESIGNACIÓN: SPLIT SHIM (N/P: B-4277-5) NNE: 5365-01-574-5534

REGLÓN N° 108: SUPLEMENTO PARTIDO

DESIGNACIÓN: SPLIT SHIM (N/P: B-4277-7) NNE: 5365-01-574-5542

REGLÓN N° 109: SUPLEMENTO PARTIDO

DESIGNACIÓN: SPLIT SHIM (N/P: B-4277-15) NNE: 5365-29-A00-1961

REGLÓN N° 110: SUPLEMENTO PARTIDO

DESIGNACIÓN: SPLIT SHIM (N/P: B-4277-18) NNE: 5365-01-574-5528

PLIEGO DE BASES Y CONDICIONES PARTICULARES

ESPECIFICACIONES TÉCNICAS

RENGLÓN N° 111: SUPLEMENTO PARTIDO

DESIGNACIÓN: SPLIT SHIM (N/P: B-4277-20) NNE: 5365-01-574-5529

RENGLÓN N° 112: TAPA SUPLEMENTO

DESIGNACIÓN: SOLID SHIM (N/P: B-4407) NNE: 5365-FA-047-2224

RENGLÓN N° 113: TAPA SUPLEMENTO

DESIGNACIÓN: SOLID SHIM (N/P: B-4407-2) NNE: 5365-01-574-5556

RENGLÓN N° 114: TAPA SUPLEMENTO

DESIGNACIÓN: SOLID SHIM (N/P: B-4407-4) NNE: 5365-01-574-5574

RENGLÓN N° 115: ARO DE ALAMBRE

DESIGNACIÓN: WIRE RING (N/P A-4427) NNE: 5325-01-574-5420

RENGLÓN N° 116: ARO RETENCION

DESIGNACIÓN: RETAINING RING (N/P: B-4426) NNE: 5325-01-574-5599

RENGLÓN N° 117: TAPON DE PALA

DESIGNACIÓN: PLUG BLADE N/P B-6481) NNE: 1610-FA-047-0093

RENGLÓN N° 118: ARO DE GOMA

DESIGNACIÓN: O-RING, PLUG TO BLADE (N/P: A-1633-76) NNE: 5331-FA-047-0102

RENGLÓN N° 119: ARO DE GOMA

DESIGNACIÓN: SCREW (N/P: A-1635-36) NNE: 5305-00-145-6971

RENGLÓN N° 120: ARANDELA

DESIGNACIÓN: WASHER (N/P: A-1638-18) NNE: 5310-FA-047-0117

RENGLÓN N° 121: TORNILLO

DESIGNACIÓN: SCREW, 12 POINT (N/P: A-1635-113) NNE: 5305-29-A00-2001

RENGLÓN N° 122: PALA

BLADE (N/P: H-90DA-8) NNE: 1610-FA-047-0100

RENGLÓN N° 123: PARCHE

DESIGNACIÓN: PATCH (N/P: A-6590) NNE: 1610-FA-047-0099

RENGLÓN N° 124: CALCOMANIA

DESIGNACIÓN: DECAL, TRADEMARK (N/P: B-6172) NNE: 7690-01-574-5810

RENGLÓN N° 125: CALCOMANIA

DESIGNACIÓN: DECAL, PART NUMBER (N/P: B-4862-X) NNE: 7690-FA-047-0098

RENGLÓN N° 126: CALCOMANIA

DESIGNACIÓN: DECAL, INSTALLATION (N/P: A-2230-9) NNE: 7690-FA-047-0097

RENGLÓN N° 127: CALCOMANIA

DESIGNACIÓN: DECAL, NOTICE (N/P: B-7367) NNE: 7690-FA-047-0096

**FUERZA AEREA ARGENTINA
DIRECCIÓN GENERAL DE MATERIAL
AREA DE MATERIAL “RIO IV”**

**ANEXO I
(APENDICE 6)**

PLIEGO DE BASES Y CONDICIONES PARTICULARES

ESPECIFICACIONES TÉCNICAS

REGLÓN N° 128: ARO DE GOMA

DESIGNACIÓN: O-RING (N/P: A-1633-3) NNE: 5331-00-599-2229

REGLÓN N° 129: TUERCA

DESIGNACIÓN: NUT (N/P: A-1639-2) NNE: 5310-FA-050-3437

NOTA: LOS REPUESTOS SOLICITADOS DEBEN SER PRESENTADOS EN ENVASE ORIGINAL DEL FABRICANTE Y SU CORRESPONDIENTE GARANTIA DE CALIDAD Y 8130.

REGLONES N° 1 al 17, 75, 84, 85, 88, 91, 94, 99, 116 y 128: LA FECHA DE FABRICACION DEBE SER NO MENOR AL 1Q 2016.-