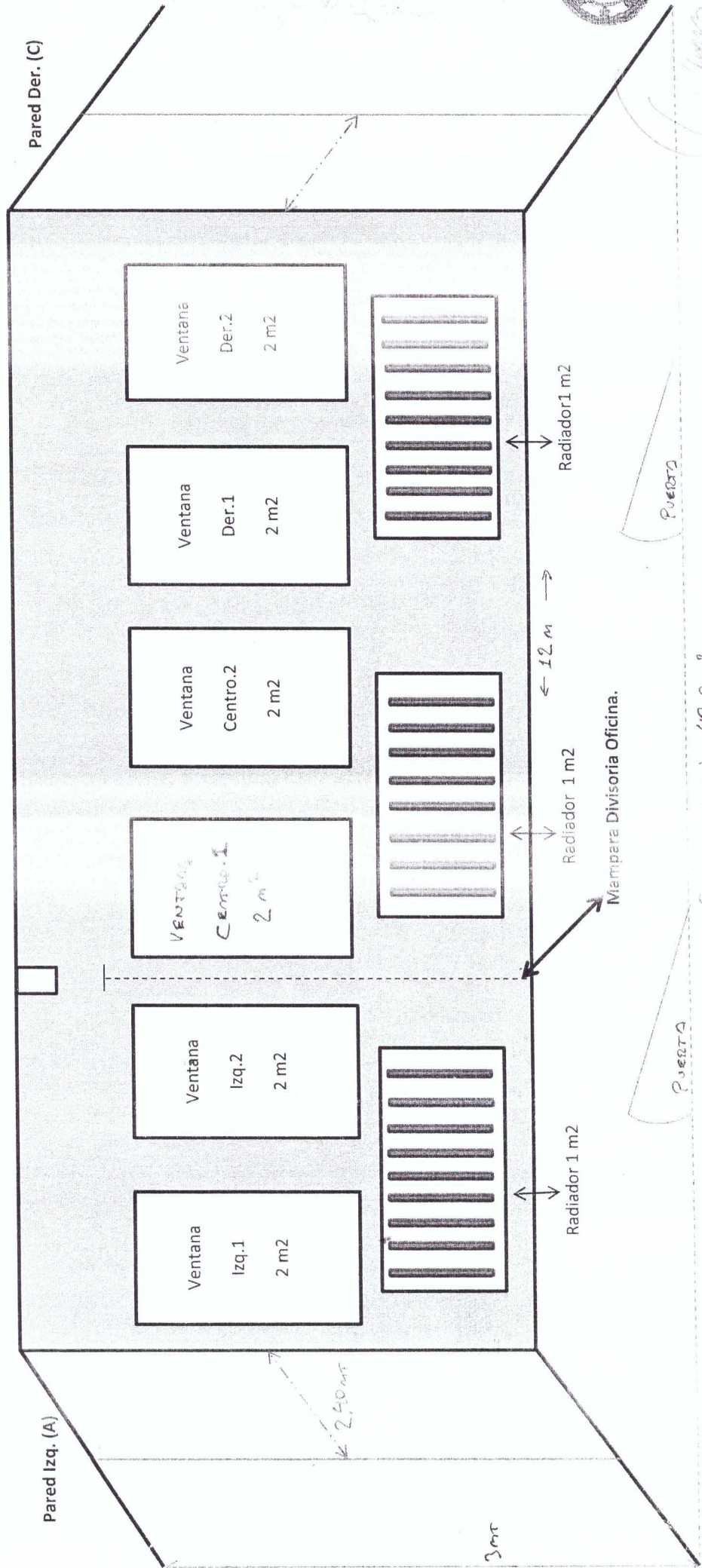


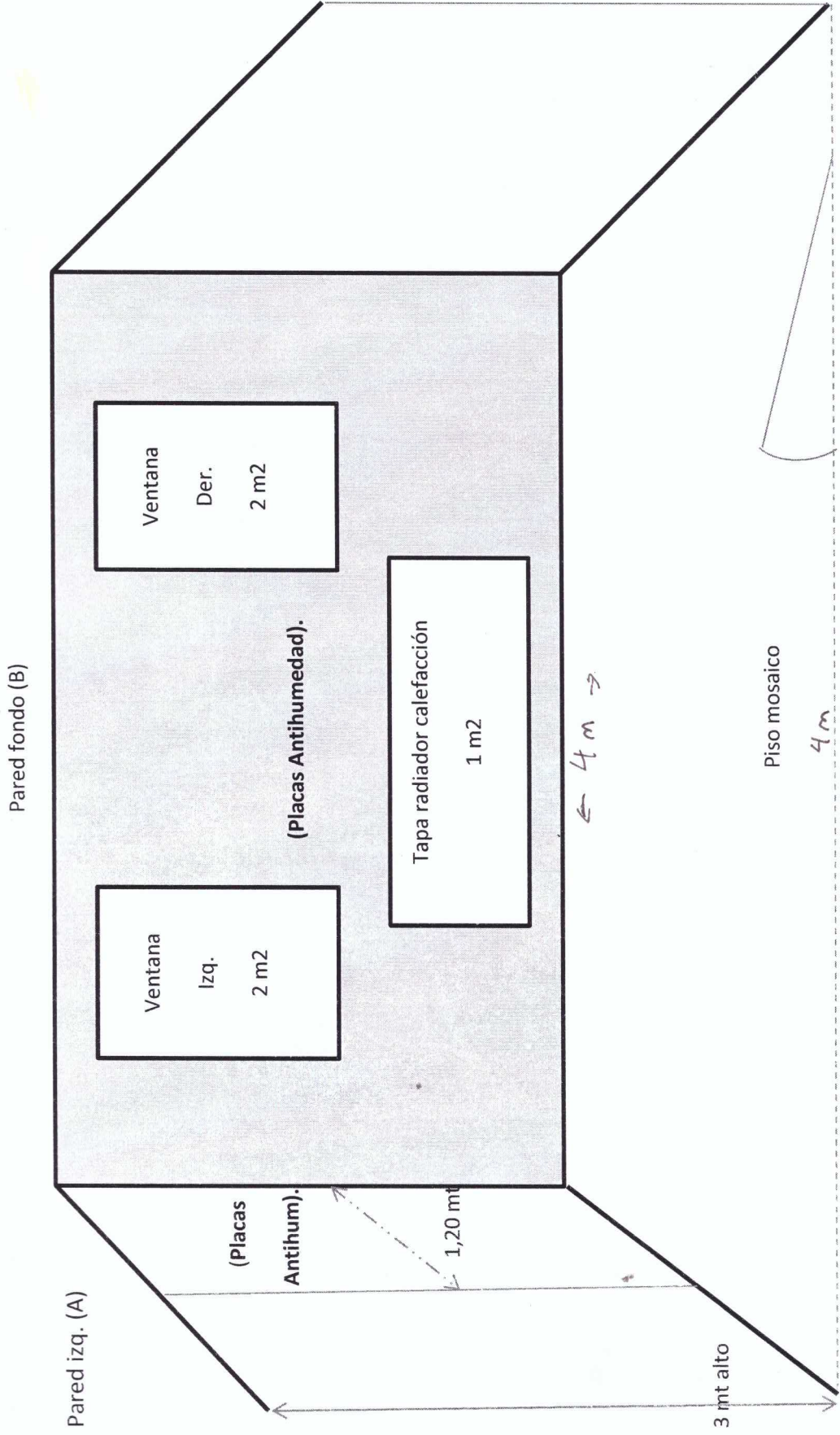
Pared de Fondo (B)



$$\text{Paredes (A) + (B)} = 43.2 \text{ m}^2$$

$$\text{Ventanas + Radiadores} = \frac{28.2 \text{ m}^2}{15.00 \text{ m}^2} \text{ total plus anti humedad a calefacción}$$

[Handwritten signature]



Pared fondo (B)

Ventana izq. 2 m²

Ventana Der. 2 m²

(Placas Antihumedad).

Tapa radiador calefacción 1 m²

← 4 m →

Pared izq. (A)

1,20 mt

3 mt alto

Piso mosaico

4 m

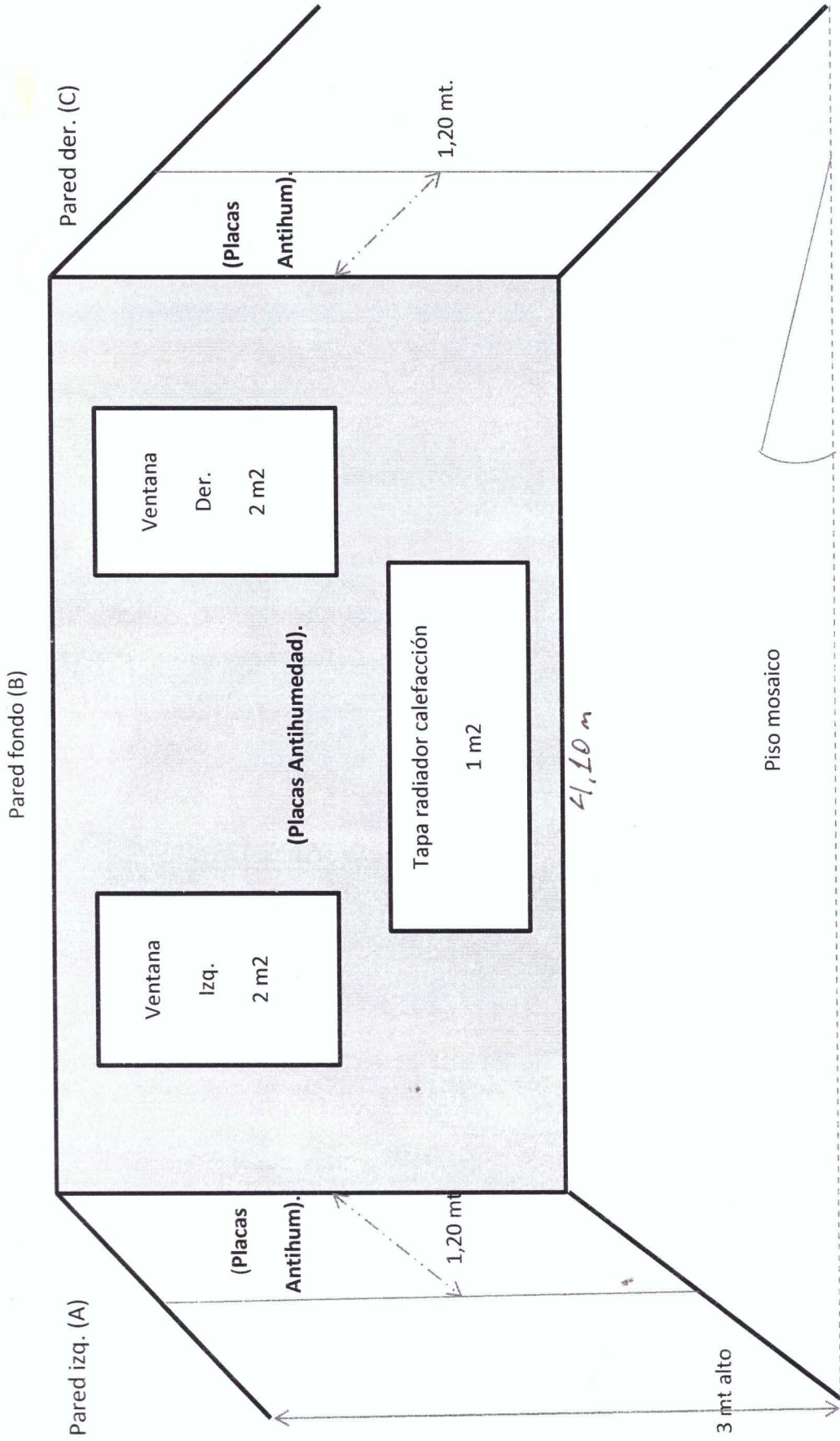
Puerta

$PARED (B) + (A) = 15,6 m^2$
 $VENTANAS + RADIADORES = \frac{6,20 m^2}{9,4 m^2}$ TOTAL m² PLACAS ANTIHUMEDAD A COLOCAR.



[Handwritten Signature]
 JEFE DEPARTAMENTO GENERAL
 SUBDIRECCION GENERAL DE ADMINISTRACION

[Handwritten mark]



$PARED (A) + (B) + (C) = 16,62 m^2$
 $VENTANAS + RADIADOR = 5 m^2$
 $11,62 m^2$ Total Placas Antihumedad
A Calcaer



HUGO DANIEL PANDO
SUBOFICIAL PRIMERO MQ
ENCARGADO